

FAIRCHILD WESTON
Schlumberger

FAIRCHILD WESTON SYSTEMS, INC.
DATA SYSTEMS DIVISION
P O BOX 3041
SARASOTA, FLORIDA 33578

NEWS ABOUT DATA SYSTEMS DIVISION

VOL IV. NO. 11

NOVEMBER, 1982

FAMILY PICNIC DREW CROWD OF NEARLY 1000



HALF WAY THERE

At the latest count, our employees have completed over 480,000 hours without a lost-time accident. Safety awareness helps avoid painful injuries. Keep up the good work! Can we reach our goal of 1,000,000 hours?

GROWTH PLAN CHANGES PROVIDE IMPROVEMENTS IN EMPLOYEE BENEFITS

Improvements in our Schlumberger Contributory Investment Growth Plan benefit were announced this month via informative meetings held with all Sarasota employees on November 10. The Growth Plan changes included three major areas:

- An opportunity for each employee to select the type of investment fund you prefer for the money already in your Growth Plan, as of December 31, 1982.
- Selection of the type of investment fund you would prefer for all future Growth Plan contributions, beginning January 1, 1983.
- Improved vesting schedule which provides for employees to be 100% vested in the Growth Plan after six years of employment, effective October 1, 1982. The improved vesting now allows 1/3 vesting after 4 years of service; 2/3 vesting after 5 years of service; and 100% vesting after 6 years of service.

Currently, over 250 employees will benefit by earlier vesting as a result of the improved Growth Plan vesting schedule. (Vesting means that the money in your account will be yours after you leave the company.)

Immediate vesting improvements affected many employees

- 4.5% of employees became 100% vested
- 9% of employees became 2/3 vested
- 22% of employees became 1/3 vested

Overall, 36% of our employees have received improved vesting benefits this month.

A comparison of the old and new vesting schedule follows:

Vesting Prior to 10/1/82		Vesting Effective 10/1/82	
4 yrs. of service	20%	4 yrs. of service	1/3
5 yrs. of service	40%	5 yrs. of service	2/3
6 yrs. of service	60%	6 yrs. of service	100%
7 yrs. of service	80%		
8 yrs. of service	100%		

(Cont d on Page 3)

INTRODUCING BIS -- OUR NEW INPUT SYSTEM FOR HANDLING ORDER DATA

A new method of handling customer orders -- order entry, shipping, and invoicing -- is now in effect for all product lines. It's called BIS, which stands for Business Information System.

BIS is an "on-line real-time system" which allows this information to be entered directly to our IBM business computer through CRT terminals located throughout the plant. This means that customer orders are keyed directly into a CRT terminal, and shipments are posted directly to those orders as the products or systems are shipped.

Automatic printing of shipping documents and computerized invoicing help to eliminate much of the manual effort-- the "blue-line" typing and reproducing we formerly used for order entry, shipping, packing lists and invoices to customers.

In addition, many other tasks, previously done manually, can be done via the computer. These include determining manufacturing unit requirements, sales tax reporting, costing of standard product shipments, etc., according to our Data Processing staff who helped put the new BIS system into place.

The purpose of BIS is to expedite customer order information to all areas of the plant for improved customer service, and at the same time to provide information to allow us to manage our business better.

"Through BIS we now draw all customer order information from a common data base," explains Dale Dennis, Manager of Systems & Programming. "Current orders, sales, and backlog information, by product line, is immediately available from BIS for business reviews."

BIS was conceived about three years ago, but the concentrated effort to implement the system has taken place since January, 1982. Hundreds of hours of dedicated analysis, design, programming, training and implementation time were needed from various areas -- MIS, Accounting, Contract Administration, Production Control, Final Q.C., Traffic, and Engineering -- to assure that the system matches the requirements of the numerous departments involved.

Dale Woodland, Project Manager, and Mike Rhodes, Principal Analyst/Programmer, led the design, development and programming of this comprehensive system. Many other employees throughout the plant contributed toward making it possible for us to adopt this advanced system for all of our product lines.

IN MEMORIUM -- BUT NO SAD FAREWELLS

These happy ladies are bidding fond adieu to an old standby -- the fluid duplicating machine on which our "blue-lines" were run. "Old Blue" is being retired as we switch over to BIS -- our new computerized system for order entry, shipping information and invoicing. (See separate story on BIS -- Business Information System.) The old duplicating machine was used for order entry, shipping information, packing lists and invoices to customers.



Jean Tomkinson, of Contract Administration; Cinda Whaley, of Billing, and Betty Austill, of Reprographics, are among the former blue-line users who said goodbye to the old fluid duplicating machine.

QUESTIONS & ANSWERS

- Q. For my insurance claims, do I need a separate doctor bill for each time I go to the doctor? Can I submit the running account the doctor sends, which shows a list of the dates of the visits, the services rendered, and the charges?
- A. Either type of bill is acceptable. BUT, if you use the "running list" itemized bill, please cross off any dates that you are NOT submitting for insurance purposes. Also, remember you need a diagnosis for each treatment or visit. This will help to expedite payment of your insurance claim.
- Q. How far back can I go to submit old bills for insurance reimbursement?
- A. A year and a half.
- Q. What items are not covered under our Medical/Dental insurance plans?
- A. A handy way to find this answer is in your Employee Guide, under the "Health Protection" section, pages 2-13, 2-15, & 2-16.

AVIATION RECORDERS AREA GETTING MORE STREAMLINED

Production Engineering and our Aviation Voice and Flight Recorders manufacturing area are in the process of streamlining the Aviation Recorders production work area. The changes are reducing the amount of work in process so that we have just one week's worth of materials in the area at one time.

"To accomplish this we have designed the assembly area layout around the material flow from work station to work station, thereby reducing the movement of material to and from stores," explained Ray Shuford of Production Engineering.



New, streamlined look in Aviation Recorders assembly area.

In addition, the number of work orders required is being reduced, and the number of material move transactions is also reduced. A special cart will deliver the parts to the production area to build the Recorders, thereby saving time needed for verification and set-up. By reducing the work-in-process to weekly rather than monthly quantities, our floor space is being used more efficiently, and the work area is less cluttered.

The next production areas scheduled for review will be the Systems Assembly area and the Data Recorders area.



Nearby is the new Aviation Recorders Tape Processing Room.

GROWTH PLAN CHANGES PROVIDE IMPROVEMENTS IN EMPLOYEE BENEFITS

(Cont'd from Page 1)

"Literature has been distributed to all employees, explaining that your Growth Plan money can now be invested in Fund A, Fund B, and Fund C, based on the individual employee's personal choice," Benefits Coordinator Wendy Schroyer said. Quarterly reports will keep employees informed as to the status of the investment funds.

If you have questions about the Growth Plan improvements, please call Wendy Schroyer, Ext 526, or Linda McKinney, Ext 525. Your Growth Plan investment fund selection forms were due in Personnel by November 30.

YOU CAN HELP OTHERS

OUR UNITED WAY DRIVE TAKES PLACE DEC. 1 - 2

Data Systems Division employees in Sarasota will have an opportunity to participate in our annual United Way campaign on December 1 & 2. There will be a film about the work of the United Way in our Cafeteria during lunch breaks. A United Way representative will be on hand to answer your questions.

Thanks to you ...
it works ...
for ALL OF US



United Way

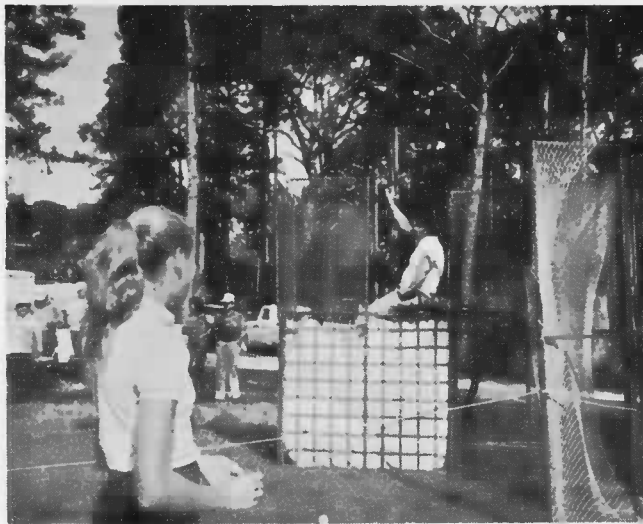
CREDIT UNION HOSTS SARA-MANA GROUP HERE

The Sarasota EMR Credit Union hosted a meeting of the Sara-Mana Credit Union Council at our facility on November 10. Representatives of area Credit Unions heard Jim Zander, Florida Credit Union League consultant, speak on "How to Market Your Credit Union." Members of the group exchanged ideas and recommendations for problem solving and improving Credit Union operations.

FUN FOR EVERYONE AT FAMILY PICNIC

Dunking tank.. games.. food.. music.. visiting with old friends.. Bingo.. prizes.. and beautiful weather.

We had all the makings of a super, old-fashioned picnic for employees and their families at the Royal Coachmen Resort on Saturday, November 6. Here are some pictures..



TOGETHER WE CAN MAKE IT BETTER

EACH INDIVIDUAL IS A FIRST RATE EXPERT

By Dexter Nash
Quality Circle Facilitator

Every corporation or organization has a small army of "experts," better known as employees. They understand the functions and systems of their particular operations, and, in most cases, they are the only people who can identify major causes of problems and detailed solutions.

It has been said that nearly everyone is a leading expert on something. It may be canning peaches, knowing where the best flea markets are located, operating a wave soldering machine, or expediting shipments to customers.

In order for Fairchild Weston's Data Systems Division to become a strong force in the current competitive market, we must involve our "army of experts." Together we can improve the effectiveness of our facility, and we can take pride in solving those daily frustrating problems.

One group in our "army of experts" is the Quality Circle representing the Standard Products Assembly area. The employees in this Quality Circle, called the "MsWits," are

preparing their first Management Presentation as PULSE goes to press. Their presentation, scheduled for November 23, involves solutions for wirelist problems. They will make their presentation to members of the Advisory Committee and Department-related Management. Circle members include Sandra Bacon, Elizabeth Byrd, Rita Keen, Zoraida Muriedas, Lori Phebus, Pat Wetjen, Delta Wildermuth, Mae Vann, and Circle Leader Pat Bowers.

Another Quality Circle, The Flamboyant Nuts and Bolts, are scheduled for a Management Presentation on December 1. The theme for their project is "Working smarter, not harder." Other Quality Circle presentations are scheduled for subsequent weeks. Highlights and pictures will be featured in future articles.

The effort and pride involved in each project has been tremendous. With the expanding involvement and the attitude of total team effort, we can make our facility a more efficient place to work.

TOGETHER WE CAN MAKE IT BETTER.

WE NOW HAVE EIGHT QUALITY CIRCLES

Introducing our newest Quality Circle -- Thursday Noon Live. The ten members of this new Quality Circle represent the employees in our sheet metal fabrication area. The Circle members are: Bill Burchette, Forest Huffman, Mark Lawson, Bob Lahmers, Lloyd Miller, Ed Morrow, Phil Stockton, Mark Stone, Bill Whaley, and Circle Leader Eldon Andrews.

The Quality Circle for our Machine Shop area, known as the Flamboyant Nuts & Bolts, has been reorganized. The seven members of this Quality Circle, representing the employees of our Machine Shop, are: John Dezzi, Helen Duthe, Bob Grados, Fred Hittel, Dan Konieczka, Paul Shetler, and Circle Leader Don Stover.



Members of our newest Quality Circle, representing the sheet metal fabrication area, are: (seated) Bill Whaley, Mark Stone, Lloyd Miller; (standing) Bill Burchette, Phil Stockton, Circle Leader Eldon Andrews, Mark Lawson, and Ed Morrow. Missing from this photo are Jim Huffman and Bob Lahmers. This Circle is called "Thursday Noon Live."



Our Machine Shop Quality Circle includes (seated) Fred Hittel, John Dezzi, Paul Shetler; (standing) Dan Konieczka, Helen Duthe, and the Quality Circle Leader Don Stover. Missing from the photo is Bob Grados. This Circle has adopted the name "Flamboyant Nuts & Bolts."

ANNIVERSARY GREETINGS TO A BIG GROUP

Sixteen of our colleagues are marking major service milestones with our company this month-- headed by three employees with a quarter of a century of service. Two employees have completed a full 20 years of service this month, and 11 employees are eligible for their five-year service pins for November service anniversaries. Congratulations!



Happy service anniversaries to: (seated) Ruth LaCroix, Don Norris, and George Zimmerman, who completed 25 years of service with our company during November. Standing are Sally Marlowe and Vic Boucher, both of whom celebrated their 20th service anniversaries this month.



Art Hallett

Art Hallett, of our Software Services Group, is based in the Wheaton, Md., office. Art completes five years of service with our company this month.

CREDIT UNION SEEKS MORE GOOD PEOPLE

Credit Union committee members and officers are currently seeking employees who are interested in working for the Credit Union next year. A new State ruling now requires that anyone who is to be nominated for election at the Annual Meeting must complete form DBF-C-62 Public Document. Forms are available at the Credit Union Office. The former practice of nominations from the floor at the Annual Meeting is no longer permitted under the State Credit Union law. Please call Ext. 535 for details.



Congratulations to these employees completing five years of service this month: Judy Mewes, Dan Konieczka, Wendy Schroyer, Joanie Odzic, Rosie Routsong, Vivian Owen, Pat Wetjen, Candy Esber, Art McWilliams, Stan Krosnicki.

CONGRATULATIONS!

SANDY SHOTTO (EDC) and her husband Randy welcomed their baby boy, Christopher Michael, on October 25. He weighed in at 8 lbs. 8 oz.

PHIL INGRAM (Recorders Test) and his wife Kathleen are the happy parents of a son, Kyle Lucas, who weighed 9 lb. 10 oz. when he came into this world on November 1.

CLIF STALDER (Data Processing Computer Operations) and his wife Laureen have a new baby girl, Casey Marie. She was born on November 3 and weighed 9 lb. 2 oz.

MARVIN LAND and his wife Anne announce the arrival of their daughter Kristina Kathryn on November 7. The baby weighed 5 lb. 13 oz.

CHARLENE and PAT PARRISH are the proud parents of a son, Christopher Glen, who was born November 16, and weighed in at 9 lb. 11 oz. Charlene works in Manufacturing Engineering and Pat is in SWS Assembly.



DON'T GAMBLE

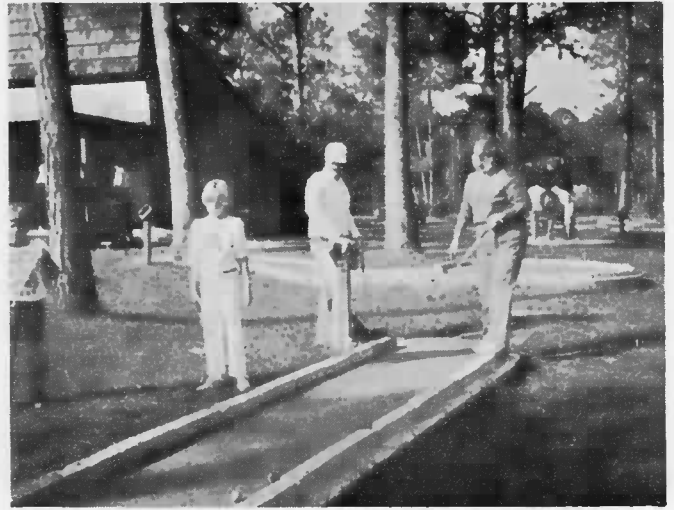
by not wearing eye protection. You'll always be the loser when the chips are down... or flying. So, don't ask for a bad deal. When you feel like betting an accident's not in the cards, remember the one-eyed Jack.

MORE PICTURES OF OUR FAMILY PICNIC

DUNKING TANK



GAMES



VISITING



FRIENDS



MUSIC



BINGO



THIS SAILOR WILL REALLY KNOW HIS CRAFT

Roger Mort is a do-it-yourselfer on a grand scale. He's building a sailboat in his back yard. But not just any little old sailboat. It's a 32-foot cutter, made of steel plate.

The dimensions are: 32-ft deck length, with a 10-foot beam, and 4'2" draft. The sail area will be 581 square feet, and the displacement (weight) will be over 18,000 pounds.

"I started working on the idea of building a big sailboat about two years ago," Roger explains. "I've been sailing for 20 years, and have been a member of the Sarasota Sailing Squadron for about four years. We currently have a 19 foot Flying Dutchman."

To prepare for building a sailboat, Roger took welding at Sarasota Vocational-Technical School for a year, and he purchased his plans for the cutter from Merritt Marine, of Norfolk, Va.

Roger's only previous boat-building experience was a small fiberglass dinghy he and friends built. Now he plans to use the dinghy for transportation between the new sailboat and shore.

The steel material he's using is one-eighth to one-half inch thick sheets of steel. Each sheet weighs between 320 and 480 pounds, depending on the size and thickness.

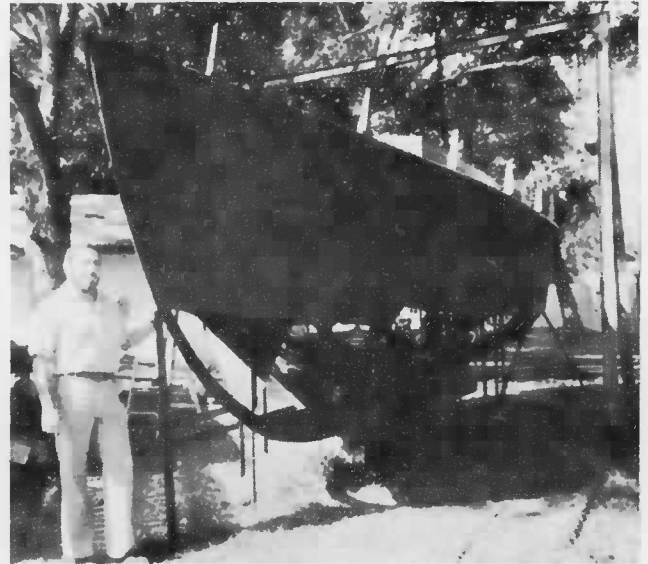
Friends and family have been very helpful on the project. Roger's wife Barbara has been very patient through the hundreds of long working hours that Roger has spent on the boat since March of this year, when he started building the cutter. Claude Howard (of Quality) and Mike Wright (of Industrial Systems) have given advice and lots of help. Roger's father, Vernon Mort, has also assisted, as have a few other friends and neighbors.

NEW TDARS EQUIPMENT TO GO TO ROBINS AFB

This new TDARS (Telemetry Data Acquisition and Reduction System) equipment is pictured during an in-plant demonstration for the customer prior to shipment to Robins Air Force Base, Georgia. The system is valued at nearly \$500,000.

The new telemetry/computer system will interface with two EMR Model 708 PCM Processors which are currently in use at Robins. The equipment will be used for flight testing of various aircraft, such as the F15 and others.

Members of our TDARS hardware/software team included Dick Haase, Herb Larrabee, and Vic Boucher.



Target date for launching the new sailboat is June, 1983. "I expect to get a 12 horsepower engine, and before we finish, we will probably have about \$7,000 invested in the boat," Roger said.

The boat dwarfs everything in the backyard of the Mort home on Prospect Street. When it's time to move the sailboat for launching, Roger plans to call for a house-moving company, or perhaps a large (very large) truck.

Here at Data Systems Division, Roger is a Scientific Programmer in our Telemetry Software group. He joined us back in 1968 as a Technician in Engineering.

Roger and his boat-building helpers are looking forward to the time when they will enjoy the reward of their labors -- some lazy sailing days on the Gulf of Mexico.



Vic Boucher, Tom Prescott (Warner Robins Air Logistics Command), Herb Larrabee and Dick Haase during TDARS demonstration.

