



SANGAMO WESTON

Schlumberger

SANGAMO WESTON, INC.  
DATA SYSTEMS DIVISION  
P.O. BOX 3041  
SARASOTA, FLORIDA 33578

NEWS ABOUT SANGAMO WESTON, SARASOTA

VOL III, NO. 10

SEPTEMBER, 1981

## READYING SYSTEMS FOR GE

General Electric's Large Steam Turbine Generator Division, of Schenectady, N. Y., will shortly be taking delivery of two additional systems from Data Systems Division. These two latest systems will join a system delivered to GE earlier this year for use in testing turbine generators which GE manufactures for power companies.

System B (a field portable digital data acquisition system) is designed to be carried to GE customer locations. It will be used to record performance data gathered from large steam turbines while they are in operation. The most important feature of the field portable system is its ability not only to record all the performance data, but also to permit recording of all test setup and "housekeeping" information as well.

System C (PCM Reformatting System) is designed to accept analog data tapes generated in the field. Its task is to prepare decommutated and reformatted digital mag tapes. These digital tapes are then used as input to GE's large turbine performance analysis system.

Earlier this year, System A (called an LP10 Test System) was delivered to GE in Schenectady. It is a data acquisition system which GE is using in connection with a new experimental turbine generator.



Jeff Carter, Don Riker and Dick Vorce with PCM Reformatting System due to be shipped to GE, Schenectady.

## 100 YEARS OF SERVICE

Congratulations to these eleven employees who observed major service anniversaries of 5, 10, 15 and 20 years with the company during September.



Seated, Doris Roberts (20 years), Bill Miles and Joe West (15 years). Standing, Tom Smeed and Larry Stewart (10 years); Berenice Henderson, Joanne Mixon, Ernestine Ray, Debbie Beyerlein, Millie Baublitz, and Eva Perez, all marking five years of service.

## THE ANALYSTS ORDER MORE MWD EQUIPMENT

An additional contract, valued at over \$500,000, has been received from The Analysts, a Schlumberger company located in Sugar Land, Texas. The order is for Signal Processor Panels (SPP) -- part of a system called "Measurement While Drilling."

The "Measurement While Drilling" technique permits readings to be taken while drilling is in process. MWD signals are transmitted through a column of mud -- without wire -- and the signals are received at the surface, and processed.

MWD provides real-time data from the well hole, and eliminates the need to remove the drilling tools in order to obtain this data.

**An Equal Opportunity Employer M/F/H/V**

# IMPRESSIONS OF A VISIT TO DUBAI -- HALF A WORLD AWAY

Chuck Berster, Senior Engineer in our Industrial Systems Software Group, returned recently from a business trip to Dubai, where he discussed technical details of an Industrial Control contract with Dubai Petroleum Company, a subsidiary of Conoco Oil Co. Here's his report

## BY C.J. Berster

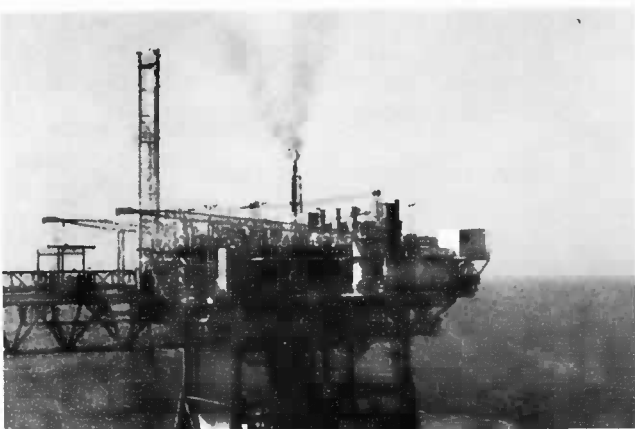
Recently I had the pleasure of experiencing a world most westerners only read about. After a 30-hour trip, I arrived in Dubai, United Arab Emirates, more than 10,000 miles from home and nearly half way around the world. An Arabian Representative of Dubai Petroleum Company whisked me through Customs. Leaving the guarded airport with my native-dressed escort, I saw my first car in Dubai-- a brand new yellow Corvette.

This sharp contrast of East and West, living side-by-side, stayed evident throughout my stay.

Dubai, I learned, is an Emirate of the United Arab Emirates, located on the Persian Gulf, and surrounded by Saudi Arabia. It is about the size of Sarasota, and the new city is just 15 years old. This city-state is a blend of modern architecture with Arabic accents, all in basic beige -- buildings, beige; streets, beige, and sand, sand, sand. Greenery can be seen here and there along with the sprinklers that operate around the clock to maintain that green color in a land where summer heat can reach 140° and the last major rainfall was three years ago.

The population is made up of various groups of Arabs, each speaking its own dialect, plus numerous foreigners from around the world, necessitating English as a common language.

Since there is no agriculture and almost no industry except for oil and aluminum, everything needs to be imported. Prices are roughly twice the level of Sarasota prices. American fast food chains and billboards dot the flat sandy terrain between cities -- McDonald's, Baskin Robbins, and the Colonel. Eating out is especially expensive. A small pepperoni pizza cost \$10.



Gas Lift Platform -- compresses the natural gas which is injected into the well during production.

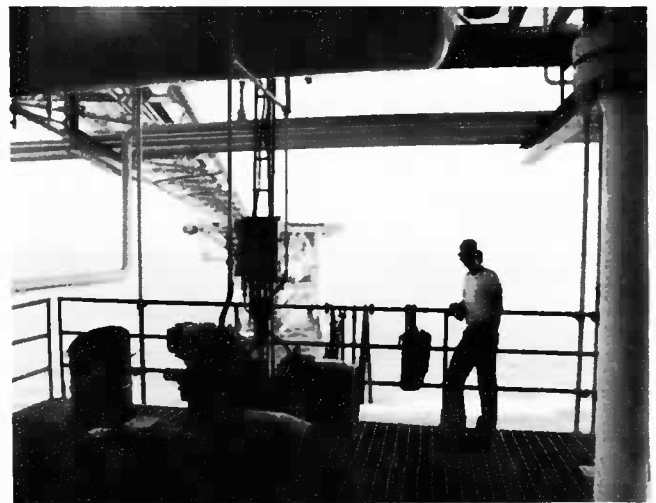
Two TV stations, one Arabic and one English, broadcast from 6 p.m. to midnight. Arabic Rock can be heard on local radio stations along with the classical.

Crime is practically nonexistent, since first-time theft offenders lose their hand and murderers lose their head. You could set your camera down in the middle of a crowded market and no one would even look at it.

All of these things make Dubai the place which it is -- very different from the U.S.A. Yet the people, who are so much like us, remind me of the basic Biblical truth that all men are brothers, capable of coexisting, working together, understanding and loving each other.

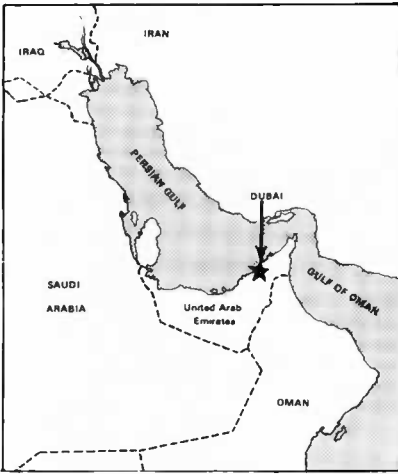


Chuck Berster was standing on Gas Lift Platform as he took this picture. At left is a Gas Extractor, atop the central production platform. The Gas Extractor recovers the natural gas previously injected into the well casing. At right is another platform where a contractor (Dugas) buys the recovered natural gas and sells it to its customers -- 60 miles away -- via a sub-sea pipeline.



Chuck Berster standing on oil production platform during his visit to the offshore oil platforms in the Persian Gulf. Above Chuck is the Gas Extractor.

## VISIT TO DUBAI. . .



CHUCK BERSTER

Our Industrial Systems group received a significant contract awarded by Conoco Oil Company, earlier this year, for oil production monitoring systems in the Persian Gulf. The system includes two computer-controlled systems for optimizing oil production on offshore oil-producing platforms. Initially 32 of our RECON III Remote Stations will be required, and the Master Stations will operate with our newly-developed SUPCON-DOS software. Chuck Berster visited Dubai recently in connection with this contract.

## WE'LL BE AT ITC

Sangamo Weston's Data Systems Division representatives and equipment will be at the International Telemetry Conference in San Diego in mid-October. The ITC is an important technical forum where telemetry equipment manufacturers and their customers can exchange information through technical papers and seminars, and the latest equipment can be exhibited.

Our telemetry group exhibit will feature a telemetry/computer system, plus the EXPRT and new Portable EXPRT products, along with two continuously-running slide shows.

Three technical papers will be presented. They are:

"A General Application Real Time Processing and Display System" by Gary Schumacher.

"Preprocessing in Today's Telemetry/Computer System," by Graham Hildebrand.

"A High-Performance Error Correction System for Digital Tape Recorders," by Bill Kessler and Jim Stein.

## PICNIC TIME IS COMING

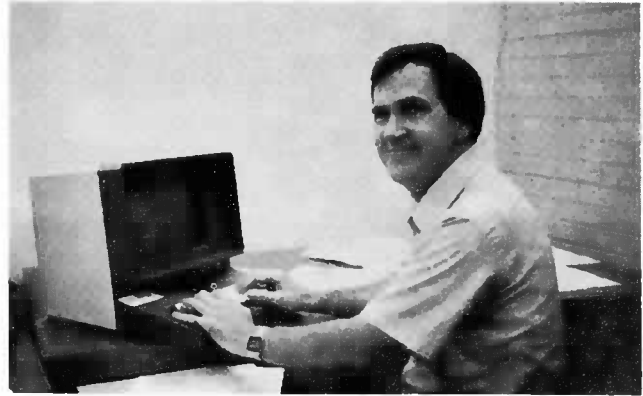
Plans are underway for Sangamo Weston's annual family picnic, and announcements will be forthcoming soon about the time, place, and the activities of the big picnic.

Watch for the announcement soon!

## NEW TRAINING AID TO HELP CUSTOMERS

A new training tool has been developed by our Training Department to assist customers in learning to operate and set up our telemetry front end equipment and TELEVENT-11 computer software.

The training aid is called the TELEVENT-11/TFE Simulator. TFE stands for Telemetry Front End. The software program simulates the TELEVENT-11 operating system and the status checking for the following telemetry front end equipment: Model 720 Bit Synchronizer, 710 Frame Synchronizer, two independent 710 Subframe Synchronizers and the 710 Signal Simulator.



Ron Spadoni, working on TELEVENT-11/TFE Simulator.

TELEVENT-11 is a unique telemetry programming system developed by Data Systems Division to operate telemetry equipment and a DEC (Digital Equipment Corporation) PDP-11 computer.

The training Simulator gives the operator the appearance of having an actual TELEVENT operating system and the telemetry equipment at his command. With the use of the training manual (TELEVENT-11 User's Guide) and in-class instruction, the customer can learn to perform the operation and set up of the telemetry equipment from a remote CRT terminal. The Simulator's software will determine if the telemetry equipment has been set up correctly, and then displays the equipment status on the terminal screen.

By using the TELEVENT-11/TFE Simulator, our customers can be totally trained to operate, set up and check out a TELEVENT-11 operating system without actually using the system hardware during the training period.

## CONGRATULATIONS

SUSAN KENNEDY (Stock Room) and her husband Michael are the proud parents of a daughter, Tara Marie, born August 27th, at 7 lb. 7 oz.

CHERYL PITTS (Accounts Payable) and her husband welcomed their 8 lb. 8 oz. son on August 30. His name is David Richard Pitts, Jr.

MARY F. BROWN (SWS Harness area) became Mrs. William Pless III in Bradenton on August 20.

LIZ BELL (Assembly) announced the arrival of her new daughter, Roshina Catrice, on Sept. 23, at 7 lb. 3 oz.

# INTRODUCING THE EMPLOYEES IN OUR CAFETERIA

Wometco's Food Service policy is always to put the customer first. At the Sangamo Weston cafeteria in Sarasota we are now offering a larger selection than has ever been available. Our newest feature, the deli bar, has been well received.

Cafeteria personnel offer some extra services to all employees. If you are interested in one of the special items, just call us and we will make sure it is available when you come in. You can also order all the regular menu items. If we have it in stock, we will make it to order for you. Your comments are always welcome at Wometco.

*Jackie Mando*

Jackie Mando  
Area Food Service Manager  
for Wometco



John Sanders performs general kitchen duties and stock work. Karen Bologna makes up the sandwiches and gourmet items for the vending machines.



Dee Hagenow, Assistant Manager, performs many duties-- at the Deli Bar at lunch, or in the kitchen, helping prepare the main dishes. Missing from photo is Chef Allen McDonough.



Cashier Jane Hattaway with Mary Haluska, who sets up the salad bar.



Frances Maine, at slicing machine, prepares sandwiches, breakfast, and serves at the hot table. Sheila Masterson, at right, prepares salads and desserts.



Sonya Carlson is Wometco's on-site hostess for vending operations at Sangamo Weston.