



SANGAMO WESTON
Schlumberger

SANGAMO WESTON, INC.
DATA SYSTEMS DIVISION
P.O. BOX 3041
SARASOTA, FLORIDA 33578

NEWS ABOUT SANGAMO WESTON, SARASOTA

Vol. II, No. 8

August, 1980

LONG-TIME EMPLOYEES GET NEW PAST SERVICE BENEFIT

A new Past Service Benefit is being added to the Company's Pension Plan for long-time employees who were with EMR-Telemetry prior to 1969. The new benefit will provide improved pension income for EMR employees who were actively employed as of September 1, 1979, and who were EMR-Telemetry employees prior to January 1, 1969.

Individuals who are eligible for this Past Service Benefit are being notified by the Personnel Department this month.

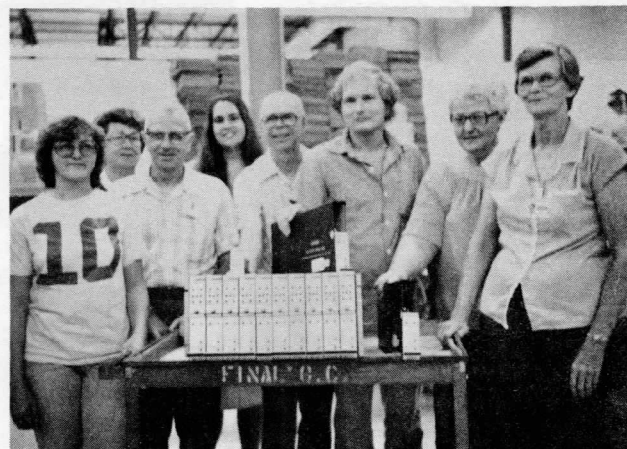
This latest improvement in the Pension Plan is part of our Company's continuing effort to improve employee benefits. Our Pension Plan is entirely paid for by the Company.

Other improvements in wages and benefits which have gone into effect during 1979-1980 include:

- ★ Improved group insurance at no increase in cost to employees.
- ★ Addition of Long Term Disability benefit and higher Short Term Disability payments.
- ★ Supplemental Income Aid plan
- ★ Additional vacation days for longtime employees who have been with the Company for more than 15 years
- ★ Introduction of Stock Purchase Plan
- ★ Educational opportunities expanded via in-house courses, paid for by Company at 100%
- ★ Improved Maternity benefits
- ★ Medical Department added
- ★ Pension increase for Retirees
- ★ Improved Cafeteria and vending machines food service
- ★ Christmas turkey for each employee
- ★ New wage structure improvements for Hourly and Salaried Nonexempt employees

FIRST SHIPMENT ON BIG ORDER

Pictured here are some of the members of the Manufacturing team responsible for the recent shipment of the initial portion of one of the biggest orders for standard products we have ever received. The order, valued at well over \$2,000,000, was placed by the Physical Sciences Laboratory of New Mexico State University, Las Cruces, N.M. It includes large quantities of 400-series & 700-series equipments, plus data recorders. Delivery is scheduled to continue over the next 12 months.



Ann Borsink, Dorothy Hall, Clarence King, Robin Voss, Harold Miller, Ray Thomas, Delta Wildermuth, Dorothy James, with some Model 420 Signal Conditioning Amplifiers prior to shipment.

PATENTS AWARDED

A new patent has recently been awarded jointly to Gene Schroeder, Senior Principal Engineer, and Bill Waggener, Senior Staff Engineer. This patent is for a "Carrier Tracking Apparatus and Method for Logging-While-Drilling System." In addition, Bill Waggener has also been notified of two other patents awarded to him, relating to a signal processor developed here for the Schlumberger Measurement-While-Drilling (MWD) service.

The MWD system, currently operational on an offshore platform in the Gulf of Mexico, is operated by The Analysts, a division of Schlumberger.

Gene Schroeder now holds two patents, and Bill Waggener holds a total of six patents to date.

An Equal Opportunity Employer M/F/H/V

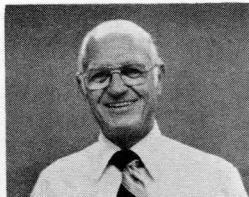
INTRODUCING THE EMPLOYEES IN OUR PLANT ENGINEERING

The Plant Engineering and Maintenance Department provides a variety of services to keep our plant facility functioning in the most efficient way. The primary responsibilities of the Department are the maintenance of our 300,000 square foot facility and remodeling construction when it is required.

The Department operates and maintains 1100 tons of air conditioning system, and a water and wastewater treatment plant big enough to serve a small town. The machine repair and preventive maintenance section maintains and repairs 310 pieces of machinery, large and small, electronically and mechanically, in support of Production and Engineering. Plant Engineering supports the different departments requiring modification or new construction, and the Department supervises all outside contractors for the buildings, grounds and janitorial services.

M. C. Fontaine

M. C. "Dutch" Fontaine,
Manager, Plant &
Facilities Engineering



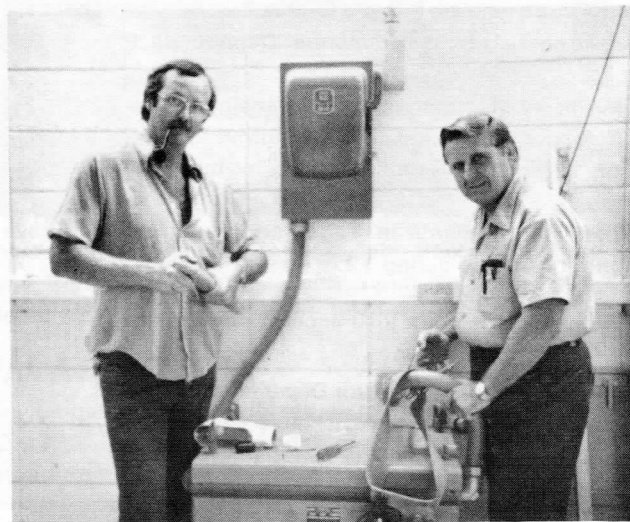
Ed Burns and Burt Ekis at work on new construction in plant.



Horst Scheller, installing paneling for new offices.



Kay Cole applies many gallons of paint throughout our building.

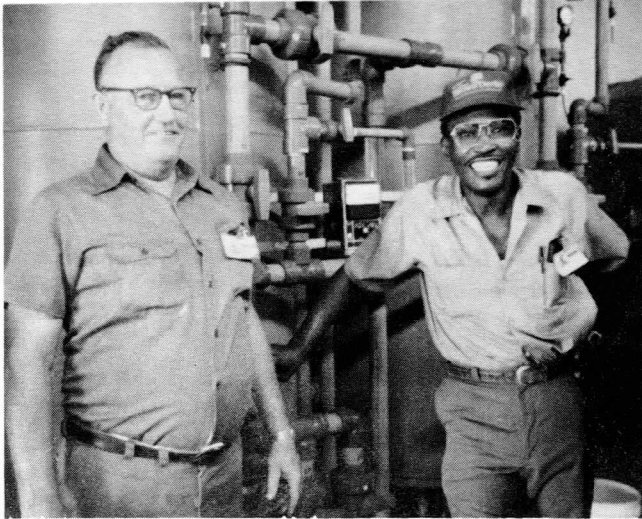


Mike Mace and Frank Knott at work on transformer.

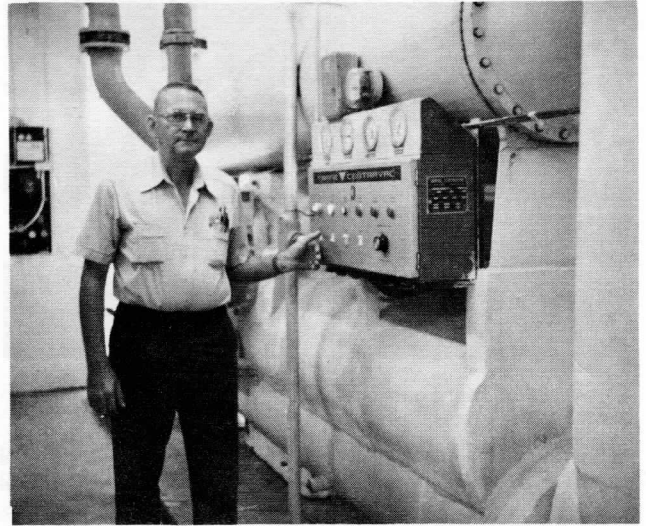


Ernie Powell at baler which is used to compact trash and to salvage cartons for recycling.

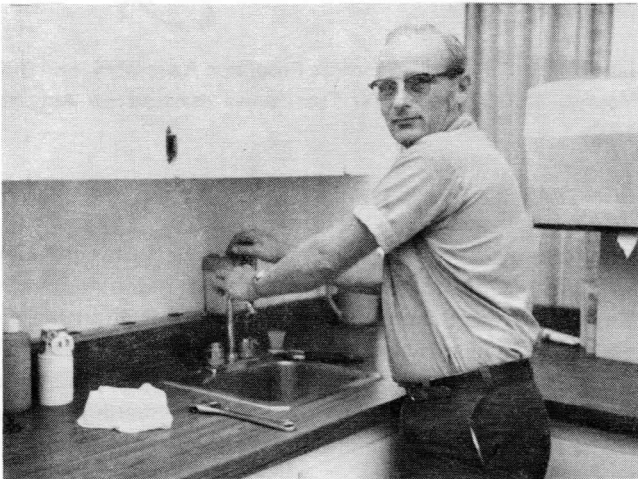
AND MAINTENANCE DEPARTMENT



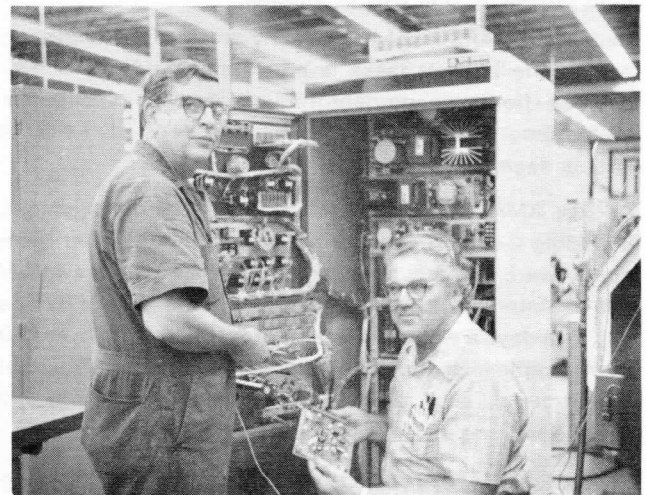
Harry Yates and Ed Christian keep our water treatment plant humming around the clock.



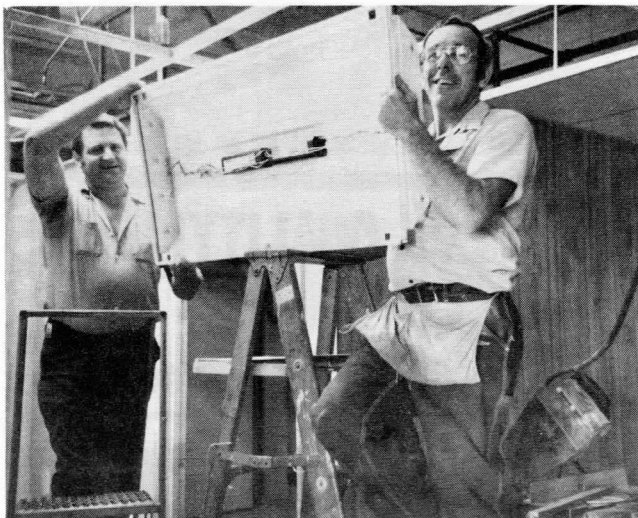
Joe Smith--maintaining 1100 tons of air conditioning involves over 100 air handlers plus 450 filters to be changed monthly.



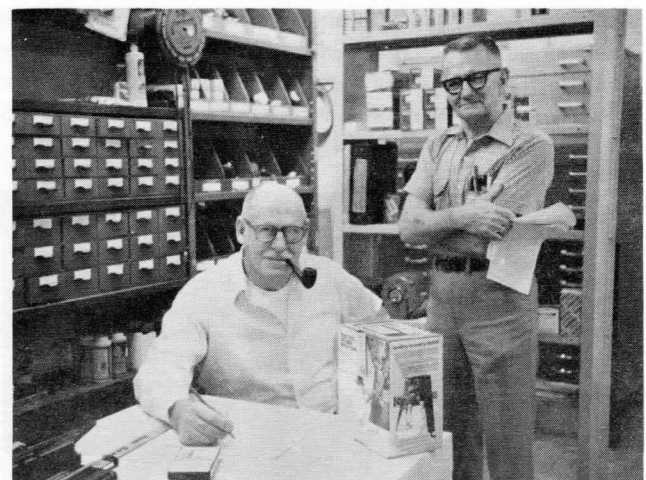
Rob Crawley handles plumbing and other maintenance tasks.



Bill Wheeler and Nevel Christie do electrical and mechanical troubleshooting on an N/C lathe in Machine Shop.



Bob Zieschang and Dave Nachtrieb installing light fixture in new office.



Everett Layton (seated) and Group Leader Glenn Campbell order supplies for Plant Engineering and Maintenance.

AMAPS IS COMING !



Members of management at AMAPS seminar.

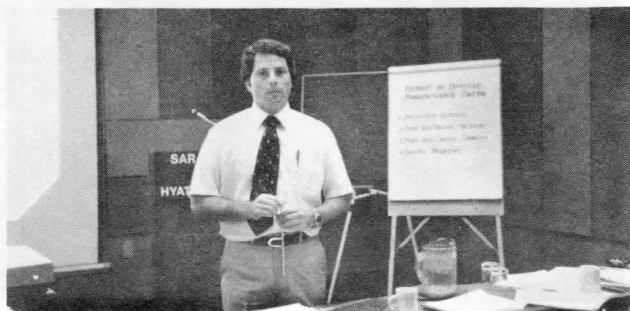
AMAPS stands for Advanced Manufacturing Accounting Production Systems. It is the new manufacturing control system which the Data Systems Division is installing. Its purpose is to improve the way our business operates--particularly in scheduling and inventory planning. The new system affects everyone at our Sarasota plant, and in our field offices, in one way or another.

Because AMAPS involves so many areas of the company, one of the biggest tasks is educating hundreds of employees--from management through all levels of responsibility--about what AMAPS is, what it does, and how it affects each Department.

All-day AMAPS seminars for members of management, including General Manager Kent Morgan and other Managers, were recently conducted by Art Grindlinger and Al Orr, of Materials. In addition, Al Orr has held classes twice a day, five days a week, since mid-July, to educate over 150 more employees for AMAPS start-up this month. Other departments, such as Marketing and Engineering, will receive training after the system starts, Al Orr said.

Dave Crickette, of Production Control, has been training employees in Production Control, Material Control, and the Stockroom to use AMAPS, using CRT terminals. They simulated different situations to let each person test their skills in taking the correct action.

Although AMAPS is a Manufacturing control system, it gives all departments a new tool to improve the way our company operates. "It is important that all employees know how the system works in order to make and keep AMAPS effective," Art Grindlinger said.



Art Grindlinger lecturing on AMAPS.

CONGRATULATIONS !

NEW ARRIVALS

Johnye Evans, of Systems, is the proud mother of daughter Cherrell Lanye, born June 28, at 5 lb. 8 oz.

A son, Robert Gilbert, was born to Lilly Matarazzo (Stockroom) and her husband Robert on July 11. The baby weighed in at 9 lb. 15 oz.

Dwight Dagenais, of Data Systems Design, and his wife Joy announce the arrival of their son Marcel Dwight on July 21, at 8 lb. 12 oz. The new baby is named after his Grandfather, Marcel Dagenais, of Traffic.

Wedding

Linda Athas, of Data Recorders Precision Assembly, and Bill Young, of Data Recorder Test, were married on August 16th.

CONGRATULATIONS TO --

Sandra Chesnut and Daniel Westbrook, daughter and son of Nancy Chesnut, of Assembly, were graduated from Bayshore High School in June. (Their graduation notice was omitted by mistake from our June Graduation issue of PULSE.) Dan plans to attend MJC and then Lawrence Institute, Indiana, to study Computer Engineering. Sandy plans to study cosmetology. Best wishes to you both.

James Hornberger, of Data Recorder Test, captured three Merit Awards in the Sarasota Herald-Tribune Photo Contest.



QUESTIONS & ANSWERS ABOUT YOUR BENEFITS

Q. How often do I have to submit a Benefit Request form for insurance claims?

A. You must complete a blue "Benefit Request Form" for each accident, under our group insurance plan. **NO ACCIDENT CLAIM CAN BE PROCESSED WITHOUT THIS FORM.**

For illnesses, under our Major Medical insurance coverage, we need just ONE blue "Benefit Request Form" for the first illness of the year for each patient (yourself and your dependents). After that, bills can be processed automatically by our Insurance Office, no matter how many different kinds of illnesses you may have during the year, as long as the doctor's bill shows a diagnosis for the prescribed treatment.

Q. I'm thinking of retiring. Can I continue my group insurance coverage?

A. Yes, you can elect to participate in the early retiree medical plan through the Data Systems Division if you retire from active employment at age 55 or over. You would pay the monthly premiums. The deductible is \$150 per person per year.

There is also a conversion plan available to employees who retire at 65, or to spouses eligible for Medicare, if they have been covered under our group medical insurance plan for at least three months. The plan is "complementary" coverage and works in combination with Medicare benefits. This conversion plan is a comprehensive medical expense plan, with three types of deductibles available: \$100, \$300, and \$500. Please call our Insurance Office, Ext. 526, three to six months before you retire to discuss these plans.

Q. Since there have been some changes in Personnel, who is handling Insurance and Pension questions?

A. Wendy Schroyer is now our Benefits Coordinator, and she will be happy to get the answers for you. Call her on Ext. 526, if you have questions about insurance, pension, Growth Plan, Stock Purchase Plan, or Long Term Disability benefits.

Q. Where do I get the blue Benefit Request forms for insurance claims?

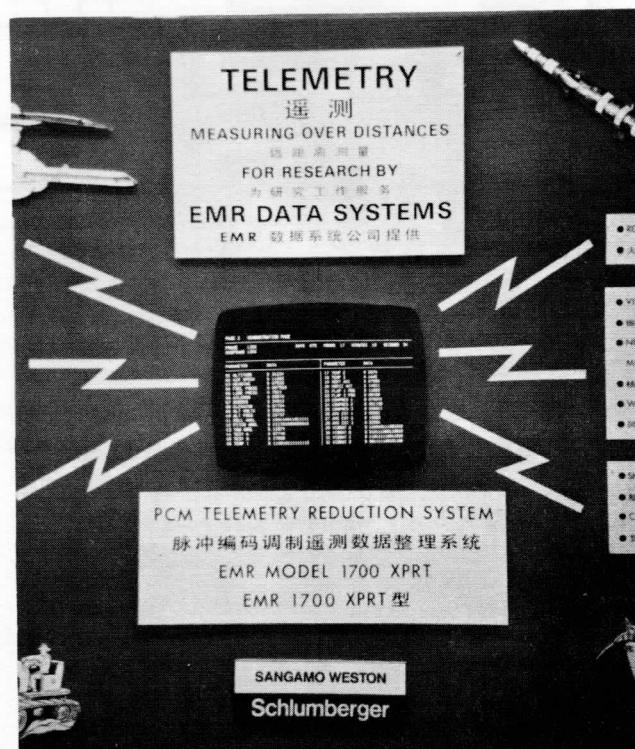
A. They are available at two locations: wall-mounted holders have been placed 1) outside the Cafeteria door, and 2) in the hallway near the Personnel Department.

Q. I did not sign up for our Long Term Disability benefit in May, but want to join now. What should I do?

A. You will need to submit evidence of good health to the Insurance Company now. Call our Benefits Office, Ext. 526, for more information about the form to complete.

HEADED FOR CHINA

If you can read or speak Cantonese, you'll understand what this display says:



It's part of the Sangamo Weston materials being displayed at an Electronics trade show being held during August in Canton (Guangzhou), People's Republic of China.

Bud Thurmond, Export Manager for the Telemetry product line of Data Systems Division, is showing our equipment, including the new XPRT telemetry data processing system. Accompanying Bud is Mr. Andrew Tse, Sales Manager of our Hong Kong Sales Representative firm, Eurotherm Far East Limited.

"The Department of Commerce has granted us a license to do Export business with the People's Republic of China," Bud Thurmond explains, "and we will be showing the XPRT hardware as well as becoming better acquainted with the general business opportunities."

Bud has also shown the XPRT system recently in Germany, England and France to a variety of potential customers and our European Sales Force.

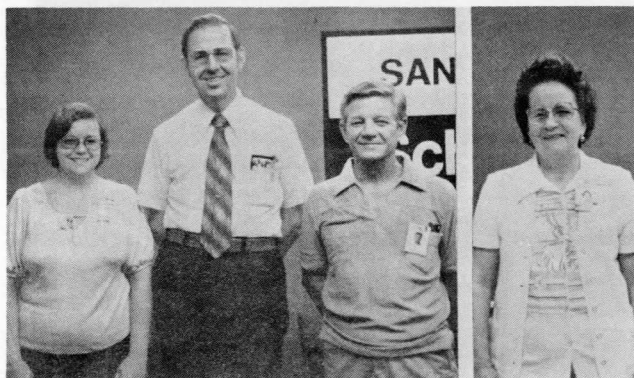
QUESTIONS & ANSWERS (Cont'd)

Q. As a new employee, how do I sign up for the Long Term Disability Income Plan?

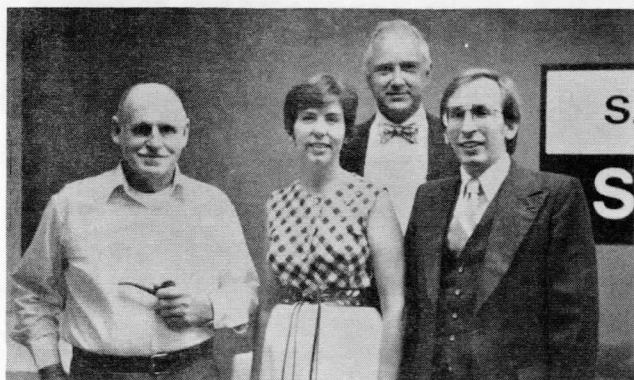
A. A sign-up card and a description of the Plan is given to each new employee. You are eligible for the Plan in 30 days, but we need the card signed by you. If you do NOT wish to sign up for LTD, please complete the reverse side of the card, called 'Waiver of Insurance,' and return it to our Benefits Office.

ANNIVERSARY GREETINGS

Congratulations to our Data Systems Division colleagues who observed major service anniversaries during July and August.



July service anniversaries were marked by: Linda Chadwick (1975), Roy Paxton (1960), Robert Van Doninck (1965) and Clarice Wynn (1960).

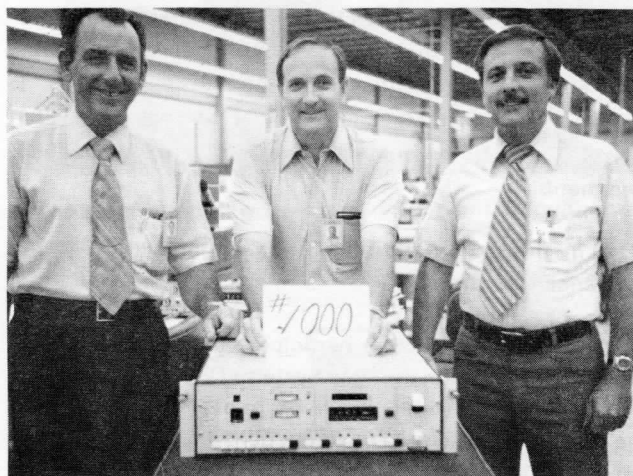


August anniversaries with our company were celebrated by Everett Layton (1960), Rosemary Williams (1965), Bill Kessler (1950) and Ron Johnson (1975).

1000 IS A BIG NUMBER

Serial Number 1000 of the Model 720 Bit Synchronizer is shown here en route from Final Test to Final Q. C., prior to delivery to the customer -- our own Telemetry Marketing Department. Marketing will use this unit for demonstration to potential customers.

The Model 720 has been a standard product sales leader for several years and is a major component in the PCM Telemetry Systems that we produce. All of the people responsible for the design, production and sales of the 720 are commended for a job well done.



Claude Howard (Quality Control), John Brisbin (Test), and Larry Watkins (Marketing), with Serial No. 1000 of the Model 720.

IN MEMORY

Josephine Baisley, our first retiree in Sarasota, died August 10, 1980. Jo joined EMR in Ridgefield, Conn., in 1954, and retired from the company in Sarasota in 1970.

OCR CAPABILITY ADDED IN WORD PROCESSOR CENTER

Our recently consolidated Word Processing Center, serving the whole Division, is located on the balcony near the center of the building. And the newest addition to the Center is an OCR Scanner.

OCR stands for Optical Character Recognition--the ability to read typewritten material directly from a page, using modern electronics and microcomputer technology.

"Word Processing" is the technique of using computer power to make typing faster and more efficient. The Word Processor machines record the typing on a disk (memory) and can make changes in the text or format, rearrange paragraphs, and print the material in a variety of type styles.

Our new OCR Scanner allows anyone with a Selectric typewriter to utilize the capability of the word processor, by simply purchasing a typing element at a cost of \$18. Then you type the material in rough draft form on a regular

Selectric typewriter, using this special OCR-B typing element. Errors or changes are merely handwritten in red, and the document is then sent to the Word Processing Center to be fed through the OCR Scanner (at a rate of about four pages per minute) and automatically recorded on a disk.

Text editing changes are made through the power of the word processor, and the document is printed at 540 words per minute. The document is then sent back to the author for signature or further revision. This process eliminates the need for retyping.

This OCR capability is especially helpful for uses such as technical manuals and proposals, technical reports, and large volume personalized letters. The OCR enables the word processing terminal to be used more efficiently as a text editor, rather than as a keyboard input station. Call Kathy Boley, Ext. 225, for more information on this service.