



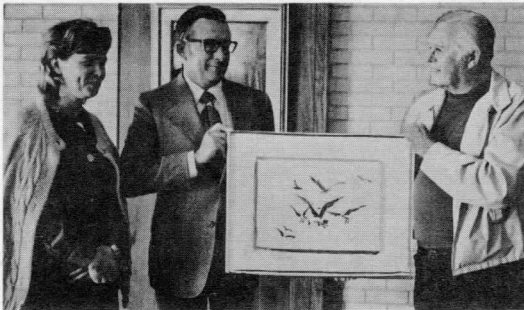
The EMR-Telemetry News Sarasota, Florida

Vol. VII, No. 10

26 February 1973

FIRST PURCHASE MADE FROM EMR-T GALLERY

Bob Klessig, Manager, Western Sales Area, became the first patron of EMR-T's "art gallery" last week when he purchased three paintings by Evelyne and Winn MacCourt. Bob says the pictures of seagulls will enhance his new office in Playa Del Rey, Calif.



"Seagulls" with Carolyn Cox, Bob Klessig and painter Winn MacCourt.

Our current art show is the second in a series of changing exhibitions by local painters. The pictures are hung in our main lobby in cooperation with the individual painters and the Sarasota Art Association. Carolyn Cox, of Material Planning, acts as EMR's art show coordinator, and all paintings are for sale at moderate prices. (See the story about Carolyn on page 8.)

Our initial show featured paintings by Julee Docking, and the current exhibition of works by Mr. and Mrs. MacCourt will run through March.

NEW 1510 SPECTRAMETER HIGH-POWERED INSTRUMENT

A major new EMR instrument--the Model 1510 Spectrameter--now being introduced to the market, is expected to bring a broad new group of customers into the ranks of EMR's clients.

The 1510 is a spectrum analyzer and is described in our sales literature as OMNISCIENT -- a high-powered word to describe a high-powered product! (Omniscient, according to the dictionary, means "having infinite awareness, understanding and insight; possessed of universal or complete knowledge...")

"Our 1510 represents a breakthrough in price/performance and design techniques," says Product Manager Dick Ridgwell.

The instrument separates signals according to frequency, and has many uses.

(continued on Page 2)



Members of the 1510 Development Team included Wayne Lockwood, Joe Lehmann, Tony Ramos and Jim Spaihts.

spectrometer cont'd.

EMR-T will itself be a customer for 1510 Spectrameters--as will many other electronics laboratories, along with the usual variety of customer applications for vibration testing, automobile testing, sonar, speech analysis and synthesis, etc.

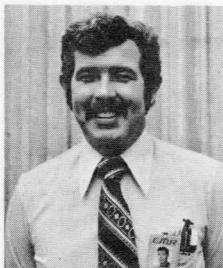
"Priced at \$8,800, our 1510 Spectrometer is superior in performance and technique to anything on the market near its price, and compares to some computer systems costing over \$20,000," says Joe Lehmann, Principal Engineer in our R & D Development Group, and head of the Development Team which originated this new product.

The 1510 is now in its product design/packaging phase, with Don Woodworth, of Product Engineering, and Bob Heaton, of Test Engineering, heading these facets of new product design. Manufacturing is currently at work on printed circuit cards and other early aspects of the production cycle.

The 1510 Spectrometer is the first instrument we've designed containing a CRT (cathode ray tube) and has one of the most attractive front panels offered by EMR.

COMPLETES COURSE

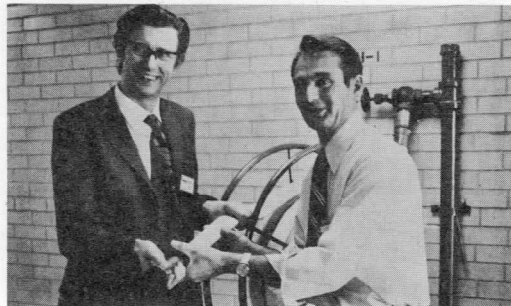
Congratulations to Jim Horvath, Artist/Illustrator in our Design and Drafting Checking Group, who has successfully completed the Famous Artists School course of study in figure illustration, design, and art direction.



The correspondence course took four years to complete and involved hundreds of hours of Jim's time, evenings and

VISITOR FIGHTS FIRE

Keith Biggs, Manager of Systems Engineering for Solartron, England, visited EMR-T last week for business discussions on joint Solartron/EMR activities in the field of Radar Simulator systems.



"Firemen" Keith Biggs, of Solartron, and Gerry Breyton, of EMR-T Export Sales.

He will have vivid memories of his EMR plant tour with Gerry Breyton, our Manager of Export Sales. As they walked through Manufacturing, a workman's welding spark ignited some foam rubber packing material and started a small fire. Messrs. Biggs and Breyton kept their cool and helped the EMR employees on the scene to confine the blaze to a small area with minimum damage.

You've heard the term "visiting fireman?" Mr. Biggs is our first visitor who actually earned the title!

weekends. Since joining EMR in 1966, Jim has progressed from Drafting Trainee to his current title of Artist/Illustrator. He assists in design and layout of our proposals, specs, sales literature and other printed or illustrated material.

PULSE - The EMR-Telemetry News
M. E. Herbst, Editor

Permission to reprint material herein may be obtained from the Editor, Pulse

COPYRIGHT © 1973 EMR TELEMETRY, WESTON INSTRUMENTS, INC.
A SCHLUMBERGER COMPANY

safety -

IT'S UP TO YOU!

As many of us are aware, we recently had a safety inspection by OSHA (Occupational Safety and Health Act) officers. The inspection covered all aspects of potential safety violations. The officers reviewed the manufacturing and office practices concerning safety application and talked with several employees to get a "feel" for the company's attitude toward a safe working environment.

Except for some minor violations that were posted, EMR was judged to be in good shape from a safety standpoint. This is a direct result of the efforts of our employees and the Safety Committee that has been directing our safety program.

However, we should never be satisfied when it comes to safety. Even with our safety program, EMR employees lost 463 days due to occupational injuries last year. Thus, while EMR has made a safe working environment for employees, we are still experiencing too many injuries.

A leading safety expert says, "A safety program is only as good as the employees involved." This gives us food for thought.

Many of our accidents were caused by not following proper lifting procedures or not thinking before performing a certain act. Let's all become more safety conscious. We cannot be satisfied with our safety program while our co-workers are still getting injured.

yum

Breakfast is now available in our Cafeteria between 7:15 and 7:50 a. m., Monday through Friday. Continuation of this added service depends on employee participation -- so stop in!

CREDIT UNION OFFICERS SELECTED FOR 1973

Introducing... EMR Sarasota Employees Credit Union Board of Directors and Committee Chairmen for the current year:



Seated, left to right: President Ed Domrzalski, Vice President Joe Pipala, Secretary Kathy Boley, Treasurer/Manager Gary Bowers. Standing: Directors Dick Ridgewell, Paul Shetler, and missing from this photo Tom Fultz; Credit Committee Chairman Dick Frye, Supervisory Committee Chairman Bill Gregory, and Credit Union Clerk Brenda Hall.

Others serving on committees include:

Credit Committee - Martha Lambert, Ernelda Kragel, George Zimmerman;
Loan Officers: Brenda Hall and Donna Watkins.

Supervisory Committee - Carolyn Cox, Shirley Buerge

Education/Publicity - Dick Ridgewell and Jim Spaihts

Delinquent Loans- Joe Pipala, Tom Fultz and Paul Shetler

Membership Committee - Brenda Hall

Growth Committee - John Brady

Assistant Treasurer - Alice Mittelbach

Our traffic group — — THE BEGINNING AND THE END!

EMR-T's Traffic group is in at the beginning--and the end--of our manufacturing cycle. Headed by Marcel Dagenais, Traffic now combines the operations of Receiving and Shipping.

All incoming materials and components are received, checked, and delivered within the plant. Outgoing products and systems are packed with great care and shipped to our customers around the world. Prompt delivery of mail... chauffeuring... special pick-ups around town... moving heavy equipment within the plant... these are all important parts of the Traffic group's activities. But most vital is getting our shipments to our customers--safely, and on time.

That may mean hiring a special van, carefully loading a big, heavy system, and driving it to the Miami airport for airlift to the California customer.

"EMR's equipment involves expensive components and months of work by dozens of employees," says Marcel. "So when we get the units from Final Inspection for shipment to our clients, they have to go fast and they have to go the right way."



Eddie Sleeman



MARCEL DAGENAIS

Known throughout the plant for their good humor and conscientious effort, our Traffic crew includes Group Leader Marcel Dagenais; Receiving Clerk Karl Foltz; Shipping Clerk Eddie Sleeman; Order Clerk Doris Sterling; and Phil Stockton, who is on temporary assignment to Traffic.

Marcel is a native of Timmins, northern Ontario, Canada, and he was once the youngest gold assayer in Canada. "But temperatures of 65 degrees below zero really got to me," he said. Marcel, his wife, Frances, and sons Dwight (of our Design and Drafting group) and Rod (formerly employed in Manufacturing) headed for Florida. "Dwight and Rod used to play hockey in -35° weather," Marcel says.

He joined EMR in January, 1958, as a private chauffeur for EMR's then Chief Executive Officer J. C. Legrand. Marcel's ability to speak French was an asset, but his duties as driver kept him away from home too much, so he donned coveralls whenever he could and helped out in shipping and in the stock room.

Karl Foltz, a native of Illinois, had 20 years of Receiving Department experience before joining EMR in 1966. Currently

he's the mainstay of the receiving function, carefully comparing quantities received with purchase orders, and speeding deliveries to Receiving Inspection and other Departments.

Phil Stockton, who transferred to Traffic from Fabrication, joined EMR in July, 1972. He drives our van some 300 miles a week on local pick-ups and works with Karl Foltz in receiving activities and delivering the goods to all Departments. Phil's a native of Portsmouth, Va., and is "almost engaged." He's currently appearing in the Manatee Players' production of "Guys and Dolls."

Eddie Sleeman is from Vermont and the father of two daughters. He's been with EMR since 1959 and is Marcel's "right hand" in packing, routing, shipping, expediting, driving and operating our heavy equipment lift.

Doris Sterling joined EMR in 1971 and is responsible for sorting and delivering our mail and expediting outgoing mail. She keeps track of waybills, shipments, etc. Doris hails from Ohio, and at home looks after her household of a husband and nine children.



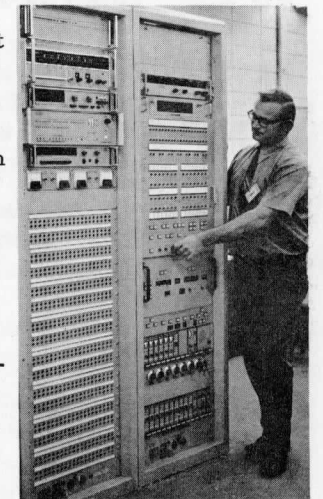
Doris Sterling



Karl Foltz, Phil Stockton

SYSTEM DELIVERED

This new EMR system, the first of several such systems, has been delivered to Jet Propulsion Laboratories, California Institute of Technology, for use in connection with the JPL Deep Space Network. Pictured with the system is Len Zeiler.



The equipment is a pre-post detection recording system featuring automatic checkout logic.

HAPPY ANNIVERSARY!



Pictured in our anniversary album today are two 15-year veterans and four 10-year employees--all observing February service anniversaries.

Left to right, they are: Gene Harbert and Don Murray (15 years); and Ken Clair, Cliff Cliburn and Jeanne Stewart who are observing their 10th anniversaries with EMR this month. In the insert is Irmgard McWhorter, also marking her 10th year with EMR. Congratulations to all!

WE CARE A NEW FEATURE ABOUT YOU...

Good news about good deeds -- that's the idea behind a new feature starting today in PULSE. We'll be looking for news about service to the community, to our fellow citizens, and to our EMR colleagues -- stories about community contributions made by EMR and by EMR employees, featuring your community service, church work, Little League, Boy Scouts, service clubs, good deeds, etc.

You can help by nominating a co-worker or an EMR Supervisor who does outstanding work--on the job or in the community. Send us your suggestions, citing the good deeds and the good EMR people who deserve a mention in our "WE CARE" column.

Use the special "Good News" form in PULSE boxes for your suggestions, and address your note to PULSE, Mail Stop 11 -- because WE CARE!

See our initial "WE CARE" items in the next column -----

DEMONSTRATE WQM

One of EMR-T's water quality monitoring systems will be demonstrated at the Sarasota County Fair March 19-24. On display will be the WQM system which was recently delivered to the Sarasota County Environmental Control Department. This EMR water quality monitoring system, now helping to protect our community against pollution, includes a Central Console and two Remote Sampling Units which are stationed at Whitaker Bayou and Phillippi Creek. EMR-T will assist the County in installing the Fair demonstration.

In other WQM activity, our mobile WQM demonstration van is currently headed for the East Coast after giving a number of demonstrations in Texas. Dave Bowlin, traveling with our WQM Van, has showed EMR's water quality monitoring capability to some 700 interested persons in 17 states and the nation's capital to date.

WE CARE...

NEWS ABOUT GOOD DEEDS

EMR-T joined with parents and youngsters at the nearby Fruitville Elementary School in supporting the PTA's "Let's Build Walls" project recently. EMR's contribution of \$400 went toward the goal of \$3600 to build corridor walls to reduce noise and confusion in the open classroom area where some 400 students have their classes. Many EMR employees have children in this local school, and EMR cares.

* * * * *

Friends -- When Dick Vorce was hospitalized recently and required quantities of blood transfusions, his friends and EMR colleagues came through with 31 pints of blood credited to the EMR account for Dick's use. Of these donors, 25 were EMR-T employees. A letter of appreciation to EMR and our employees was received from the Lower West Coast Blood Bank, and Dick is now back at work. Yes, we care.

* * * * *

During our recent National Sales Meeting, the late Harry Johnson, Senior Sales Engineer, received a posthumous sales award for achieving his December sales goal. The prize--a Heathkit Stereo Receiver--valued at over \$400, has been assembled and put in working order by our Test Department for the Johnson family... another demonstration of EMR's concern and the affection Harry's colleagues felt for him and his family.

SCHOOL GROUPS VISIT

Groups of students from area schools frequently visit EMR-T during the school year for field trips which tie into their studies. Individual EMR hosts brief the students on our activities and conduct personalized plant tours geared to the special interests of the visitors.

Among the recent visitors we were pleased to host were a large group of over 50 8th grade science students from St. Martha's School, who toured the plant in two separate sections, and a Brookside Junior High Work Experience Group (9th grade) who learned about the variety of jobs and skills which our employees hold. Their instructor at Brookside is Guy Amuso, husband of Judy Amuso, of Personnel.



Dave Clouse makes a point for visiting St. Martha's students.



Host Dave Colin with group of science students from St. Martha's School.



Jim Eames (left) and Instructor Guy Amuso (at right) with Brookside Junior High students.

DRILL NEW WELLS

That drilling rig in the north field of EMR property last week was sinking two new 260-foot wells to provide additional sources of domestic water. (Domestic water is used for human consumption and in many industrial processes.)

Since our initial wells were drilled over 16 years ago, the water table has gone down, water quality in many cases has deteriorated, and some old wells have caved in, making it necessary to drill

these two new wells to obtain water of suitable quality.

To save water, EMR is continuing its long-established practice of water conservation by recycling certain water systems and through our advanced waste water treatment system which enables us to utilize our waste water to sprinkle our 15-acre tree farm. This sprinkling system re-introduces the treated waste water into the ground to be usable again in the future.

who's who

CAROLYN COMBINES VARIED TALENTS WITH HER JOB

Carolyn Cox's job at EMR is Expediter in Material Planning, but she has a wide range of talents and outside interests, including art, theater and music. Those talents have been useful recently when she assisted in refurbishing our Cafeteria and our main lobby.

Sam Gray, of Procurement, and Bob Mohrfeld, of Plant and Facility Engineering, invited Carolyn to serve as a color coordinator when our new Cafeteria was being planned. She worked with Sands and our in-house personnel to come up with the attractive blue-and-white decorative scheme for the Cafeteria.

Then, when the main lobby of our administration building needed doing, Carolyn joined with Jim Horvath, of Drafting, and others, in planning the decor--including a series of changing art exhibitions.

"It was Mr. Long's idea to have paintings in the lobby. When I called the Sarasota Art Association, they were enthusiastic about having changing exhibitions by local painters," Carolyn said. "The pictures are reasonably priced and all employees are welcome to buy them."

Her own artistic direction is portraits in pastels or pencil sketches. "I do portraits from photographs, and people say the likenesses are good," she says modestly.

Her career at EMR goes back almost ten years, with service in Accounting, Procurement, Materials and Production Control. Carolyn and her two children -- Jim, 12, and Janice, 11, -- returned to Sarasota in 1971 after a year on Florida's East Coast during which she tried her hand at portraiture at a resort hotel and later worked as an Assistant Buyer for a hospital supply house. Long-time EMR employees will remember Ray Herron,



Carolyn Cox and sketches of her children

Carolyn's father, who was employed here as Manager of Procurement Evaluation back in 1963.

Carolyn has sung soprano in her church choir and enjoys performing in local stage productions. She recalls one role in particular--Fatima, the belly dancer in Show Boat. "I remember one morning I had a strange sensation in the abdomen. I checked and discovered I hadn't removed the jewel from my navel after the performance of the night before!"

Recently, her knowledge of stage makeup was also helpful when she made up Ed Tafelski as a clown for EMR's Children's Christmas Party.

Carolyn was born in Flint, Mich., has lived all over the States including Hawaii, attended 17 different schools, and lived in 100 different houses. Variety and talent -- that's Carolyn.

JUDGE LIPPMAN--Milt Lippman, Senior Technical Writer in Technical Publications, served as one of the judges in a regional high school conference of Future Business Leaders of America on Feb. 17. The conference, hosted by Riverview High School, featured student workshops and contests such as the Spelling Relay which Milt judged.