

# PULSE



**The EMR Telemetry Division News**  
Sarasota, Florida

Vol. II, No. 4

23 June 1967

## DIVISION CUSTOMERS GET PCM INSTRUCTION HERE

Another of the Telemetry Division's training courses in PCM (Pulse Code Modulation) was taught in Sarasota earlier this month for a group of 22 "students" representing a wide range of EMR customers.

According to Training Director Art Kelley, firms which sent employees to Sarasota for PCM instruction by our Engineers June 5-8 included: Eglin Air Force Base, Florida; GE-ASD, Kennedy Space Center; Lockheed-Georgia; NASA Lewis Research Center in Cleveland and NASA Kennedy Space Center, Cocoa Beach; TRW Systems, Kennedy Space Center; U. S. Army Proving Grounds, Yuma, Arizona; Vitro Services, Fort Walton Beach, Fla.

## CEV SYSTEM SHIPPED TO FRENCH CUSTOMER

Word has been received by Marketing of the safe arrival in France of the EMR CEV-NECTAR system which was shipped from Sarasota on June 9. This is the first Telemetry Division 2700 system for use with a computer to be delivered to a customer. The EMR subsystem will be combined with a French-built computer by our sister company, Société d'Instrumentation Schlumberger for the French aircraft flight test center, Centre d'Essais en Vol.

Next step is a trip to France for Project Engineer Paul Germond and Frank Wakefield for the customer's acceptance tests in July. Maybe Paul and Frank will be there to celebrate Bastille Day on July 14!

## EMR EQUIPMENT HELPS IN TITAN VELA LAUNCH

Martin Marietta Corporation, Denver, has informed the Telemetry Division that once again EMR equipment has assisted in a successful Titan III launch. J. E. Agnew, Manager of Systems & Components Procurement for Martin-Denver, stated in a recent letter:

"It is again a pleasure to pass along to you the results of the latest flight in the Titan IIIC development series. Launched from the Eastern Test Range on 28 April 1967, this vehicle, in the first exercise of Flight Plan X placed Vela nuclear de-

tection satellites in the precise transfer orbit required to match the Vela inject motor capability for circularization into a 60,000 nautical mile orbit. Three smaller Orbital Research Satellites were also injected into and will remain in the transfer orbit....

"Again because of the part which your company played in this flight, we wish to share our pride in this accomplishment." EMR equipment involved was the Model 121 Transmitter.

# EMR OBSERVES TENTH YEAR IN FLORIDA — MO

EMR is observing a decade in Florida. Just ten years ago, in late June, 1957, the Company moved into the brand new Production building, first of a series of new buildings which over the years grew to the building complex of the Telemetry Division as we know it today.

The decision to move EMR operations from Ridgefield, Conn., to Sarasota, Fla., was made in November, 1956. In December, temporary quarters were set up in five store fronts in the Sun Haven Shopping Center, Clark Road. A few key personnel came down from Ridgefield and started hiring a nucleus of Sarasota employees, among them EMR Sarasota "pioneers" Jim Hawkins and Anna Marie Schmidt, who started in December, 1956, and were quickly joined by others.

A series of two-week training courses for assemblers was immediately initiated, conducted by the Sarasota County adult vocational educational system at EMR's Clark Road temporary quarters. The



Graduates of the first assemblers' training class for EMR Sarasota Production Employees in January, 1957, chuckle over clippings about the "pioneer" days. Effie Anderson, Group Leader Dorothy Bennett, and Myrtle Dusel are seated, left to right, with Rose Higgins and Group Leader Evelyn Severson standing.



Original Production Building

first class of eleven women was graduated on January 4, 1957. Five members of that first class of trainees are still employed at the Telemetry Division. (See photo at left.)

The move from Clark Road to the original Production building took place over the three-day period, June 24-26, 1957. The bright new air-conditioned building covered 45,000 sq. ft., and extended from the present location of Shipping to the Receiving area.

The new building offered quite an improvement over the temporary quarters. At Clark Road there was no air conditioning, no private offices. If a personnel problem required a confidential chat, the conferees talked out back under the orange tree - unless, of course, it had been raining, and the mud was too deep!

As we moved into the new building, EMR's Sarasota employment totaled 180. That number was soon swelled by Ridgefield employees who moved to Florida during the summer and fall of 1957 and by continued expansion of Sarasota operations.

## PULSE

The EMR - Telemetry Division News  
M. E. Herbst, Editor

# VED INTO PRODUCTION BUILDING IN JUNE, 1957



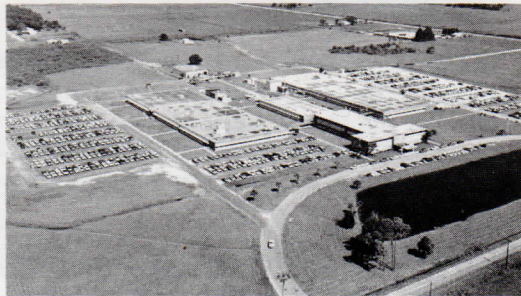
And then there were two...

Immediately after the first building was occupied, plans were announced for construction of a second building of 30,000 sq. ft. The two-story T-shaped Administration building was completed October 1, 1958, and originally housed our Engineering, Accounting, Personnel, Sales and Administrative personnel.

By August, 1959, a large addition to the west end of the Production building was begun to accommodate EMR's expansion into the metalworking field. Early in 1960 the addition was ready for use by the Fabrication Department, which included machine shop, sheet metal shop and plating.

In December, 1959, construction started on the L-2 (Lab-2) building. Early occupants of the building were Systems Engineering, and the proposal writing group. Since mid-1963 the building has gradually been converted to use by service functions such as cafeteria, communications, security, library, and reprographics.

EMR's "population explosion" - caused by expansion, the award of the big Dynasoar contract, and subsequently the World Wide Range contract - created the need for more work space. The three segments of the huge "S" (for Systems) building - S-1, S-2, and S-3 - were built in rapid-fire order starting in August, 1962, and completed in early 1963. Engineering now occupies that building.



Recent View of the Telemetry Division

Striking as it is, the physical evidence of EMR's growth in Sarasota in ten years is merely a reflection of the company's growth in technology, manpower, and business volume. From a handful of employees 25 years ago, EMR has grown, through expansion and acquisition, to a multi-faceted, five-division organization. Besides the Telemetry Division in Sarasota, EMR now has the Aerospace Sciences Division, College Park, Md., the Computer Division, Minneapolis, Photoelectric Division, Princeton, N. J., and Magnetics Division, Van Nuys, Calif.

The Telemetry Division has some 75 employees who are veterans of more than ten years with EMR. They share lots of reminiscences -- the graduation parties for the new assemblers as they completed the training classes at Clark Road, getting your car stuck in the mud before the parking lots were paved; hanging onto the steering wheel to keep your car from leaving the high-crowned, bumpy lane that was Fruitville Road before resurfacing -- and many more.

Few EMR employees who moved into the Production building ten years ago could have predicted EMR's growth over the following decade. And who among us can foresee the problems, the opportunities, the challenge and the growth which the next ten years will bring?

## EMR PRESTIGE AD WIDELY CIRCULATED

The Telemetry Division was represented at the 27th International Air and Space Show at the Paris LeBourget Airport via a four-page color ad insert in the May 29 special issue of Aviation Week & Space Technology.

Our part in NASA's Orbiting Solar Observatory, and other Telemetry Division achievements, are described in the colorful insert. The ad was jointly prepared by EMR, Ball Brothers Research Corp., and Spectrolab for the special issue of Aviation Week & Space Technology which highlights international air and space competition. Advertising benefits will continue to accrue as sales promotions groups here and at Ball Brothers and Spectrolab distribute ad reprints to prospective customers. Copies have been posted on bulletin boards.

---

## CREDIT UNION PROSPERS

The EMR Sarasota Employees Credit Union is in an excellent financial position, according to the May financial report prepared by Treasurer Ed Annaratone. Value of shares totaled over \$40,000, with 75% of that amount out on loans. Membership at the end of May was 348.

"As the result of our good financial condition, the Credit Union's Board of Directors has voted to increase to \$350 the signature loan limit for qualified borrowers," ESECU President John Brady says, "and we are now able to grant secured loans up to the amount of \$4,000."

---

**FOR FAST TECHNICAL INFO ---** Attention Engineers, Technicians: No time to read all those technical periodicals? Try Librarian Ruth Standley's new timesaver. She posts a copy of the table of contents of current technical journals on a bulletin board outside the Library door. You can scan them on your way to the Cafeteria and select the articles worth reading. It's fast, cheap and easy! Tom Maresca suggested the idea.

## EMR COMPUTER DIVISION ENLARGING ITS FACILITY

A 65,000-square-foot addition to the EMR Computer Division's existing building in Minneapolis has been started, according to an announcement from Computer Division General Manager Earle W. Wallick. The enlarged facility, totaling 100,000 square feet, will house the Computer Division's executive offices, marketing, engineering, and manufacturing. Completion of the addition to the building at 8001 Bloomington Freeway is expected in the fall and will permit the consolidation of all Minneapolis EMR personnel at the one address. In recent years office space for about one-third of the Computer Division's Minneapolis employees has been leased at a separate nearby location.

---

## INSURANCE BOOKLETS GO TO EMPLOYEES TODAY

Two handy insurance booklets are being distributed to all employees today. "Employees Group Insurance" gives a condensed, non-technical description of our insurance plan in general terms for quick reference. The second pamphlet, "Medical Expense Diary," will help you keep track of medical expenditures so that you will know when you have established your deductible and are eligible for reimbursement of your medical expenses.

For answers to your specific insurance questions, or if you did not get your copy of the booklets, please call Jessica Sutton in the Insurance Office, Ext. 292. The Insurance Office is now located in the Cafeteria building in the Security and Services area.