

# PULSE

SANGAMO WESTON  
Schlumberger



The EMR-Telemetry News  
Sarasota, Florida

Vol. X, No. 12

HAPPY HOLIDAYS!

December, 1976

December 1976

Ladies and Gentlemen:

*This year has been a difficult one for EMR. The continued sluggishness of the economy has adversely affected our sales. For the U.S. Government fiscal year, ended September 30, 1976, defense spending was \$3.1 billion, less than forecasted in March. This reduced spending had a negative effect on the order input. However, Export orders were up significantly and partially offset the decline in domestic orders.*

*We have, however, continued to invest in new products and new markets. We expect substantial growth from some of these areas next year. An increase in orders for the past two months supports our forecast for a significant improvement in performance in 1977.*

*We could not have accomplished what we did in 1976 without the dedication and hard work of all the people at EMR. I think you have demonstrated you can perform well under difficult circumstances.*

*As we approach the holiday season, may I extend my sincere "thanks" for your fine efforts and wish each of you "A Merry Christmas and a Happy New Year!"*

JIMMY G. LEE,  
Vice President & General Manager

JGL/dps

## READYING HAWAIIAN LUAU FOR CHRISTMAS PARTY

Probably the most unusual Christmas party for any EMR employees this season is the one planned by a group at the west end of our Manufacturing Building. They are having a Hawaiian Luau, complete with a pig roasted in a pit.

Forty-eight employees in Printed Circuit Fabrication, Plating, Metal Fab, Paint Dept., and Fab Inspection have contributed \$5 each, and John Thornton and Anne Stinton, both of the P. C. Fab area, are the Luau coordinators, with a big assist from John's wife, Anna, and their son, Bob.

Special permission was obtained to dig a pit near the southwest corner of the Manufacturing parking lot, and a 135-pound pig is ready to give his all for the feast.

John Thornton and his son will be in charge of the pig roast. John lived in Hawaii for seven years, and his wife was born in Hawaii. Here's the process

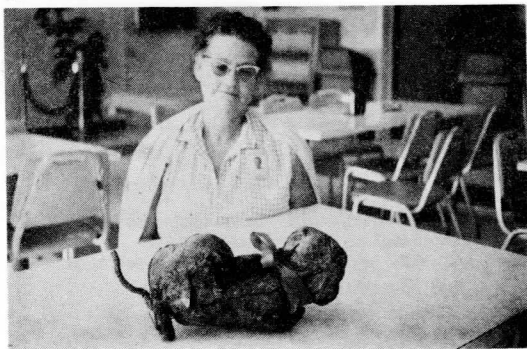
for the pig roast, according to John:

"First you dig a pit about 2-1/2 feet by 5 feet, and deep enough for the pig roast. Then you build the fire with logs and heat the special lava rocks until they are red hot. Then the fire is removed. Next you put on layers of banana leaves and stalks, wet burlap, and then the whole prepared pig in a wire mesh basket, more wet burlap, more banana leaves and stalks. My son will stay with the pit all night to be sure no steam escapes, and about 11 a. m. on the day of the luau we will open the pit, and the pork should be tender enough just to shake the meat loose from the bones."

In addition, John's wife is preparing steak teriyaki and fried rice. Other good cooks are making baked beans, potato salad, cakes and other goodies for their international buffet on December 23.

What's Hawaiian for "Bon Apetit"?

## SWEET PATOOTIE



Grace Bryan, of Assembly, could call the dog in this picture her "Sweet Patootie." It's really a sweet potato which grew into a shape so closely resembling a dog that Grace tied a ribbon around its "neck" and brought it to work to show her colleagues. Grace plants sweet potatoes in her garden as a winter cover crop, and was startled to find this huge root when she dug her harvest.

## DALE DENNIS HONORED

Dale A. Dennis, EMR's Manager of Data Processing Systems, has been honored by the Sarasota-Manatee Chapter of the Data Processing Management Association with its Individual Performance Award. The Award cites Dale's "sustained, meritorious chapter service and dedication to the ideals and professional development objectives of the Association."

Presented to Dale at the local DPMA dinner meeting in November, the award represents a significant honor. The plaque has been presented only three times in the 13-year history of the local DPMA chapter. Congratulations, Dale.

PULSE - The EMR-Telemetry News

M. E. Herbst, Editor

Permission to reprint material herein may be obtained from the Editor, Pulse

© Copyright, 1976 EMR-Telemetry.

A SCHLUMBERGER COMPANY

## SYSTEMS ASSEMBLY GROUP HELPS GET IT ALL TOGETHER

Whenever EMR ships a new system to a customer, you can be sure that it took a lot of EMR people and a great deal of technical know-how to produce that equipment--from our marketing and sales people to our engineers, technicians, draftsmen, designers, programmers, metal platers, printed wiring board operators, machinists, painters, assemblers, test technicians, quality assurance people, and many more.

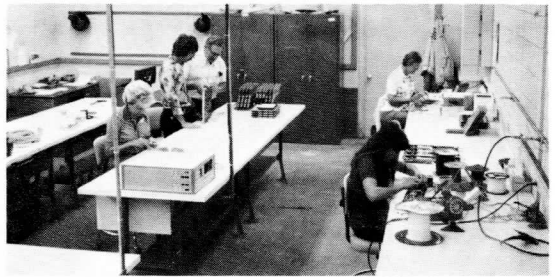
One group, known as Systems Assembly, really gets involved with just about every system we produce. Supervisor George Phillips and his group of eleven men and women utilize their assembly techniques to help get it all together--wiring special boxes, modifying standard products, integrating the parts into a whole system to meet the customer's requirement--with a minimum of direction and sometimes with the aid of only a marked-up schematic.

Working closely with both Manufacturing and Engineering, they not only put the system together, but then frequently have to tear it down and re-assemble the whole system into a van or other shelter that the customer needs. Oftentimes it means tearing down the system for packing and shipping, too.

Currently our Systems Assembly group



Ruth Saccuzzo, Bob Moore, George Phillips, Alyene McCoy, and Marie Valence working together on a system.



New work benches were installed recently for our Systems Assembly group. Here they work on special boxes, modify standard products, and do cabling and harness work for EMR systems.

includes Cora DiBello, Kathy Lowe, Alyene McCoy, Joanne Mixon, Robert Moore, Doris Pruitt, Ernestine Ray, Ruth Saccuzzo, Richard Sargent, Jane Stepp, and Marie Valence.

Their work requires flexibility and physical dexterity. They do a variety of tasks --from electronic assembly to mechanical assembly. And like most EMR employees, they do a darned good job!

## NEW FOUNTAIN ADDED

That new fountain installed in EMR's pond serves not only to enhance the approach to our plant, but will also aerate the waters and help to introduce more oxygen into the pond. It is expected to result in a better ecological balance for the fish, turtles and other marine life -- courtesy of Plant Engineering and Maintenance.

## CHAMPION BOWLERS

EMR's men's bowling team in the Merchants League is once again in first place. Last year, the men took top honors. with 85 wins and 47 losses--first time EMR has won in eight years. Currently, they have about 34 wins and 14 losses. Team members are Capt. Jerry Belveal, Jim Rexrode, Joe Faso, Don Buffington, and Don Norris.

## NEW RETIREES ADDED

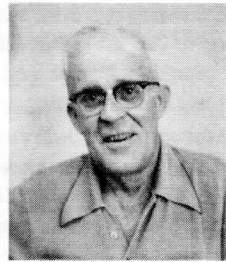
EMR Telemetry's list of retired employees is growing. Latest additions to the group of retirees include the following who left EMR's active rolls during the past nine months:



Hope Annis & Clio Hutcheson



Gerry Johnson



Karl Foltz



Lisa Sabbarth

Hope Annis and Clio Hutcheson both elected early retirement in April of this year.

Clio Hutcheson, an Assembler with EMR since February, 1957, is staying at home to spend more time with her husband and be a full-time homemaker.

Hope Annis and her husband Earl are planning to travel across the country as soon as her health permits. Hope was most recently a Material Control Planner and had been with EMR since Feb., 1960.

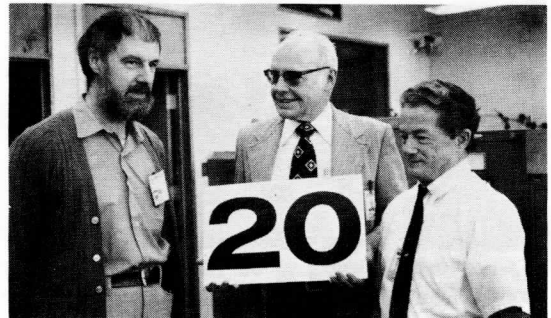
Geraldine Johnson (Executive Secretary, Marketing) joined EMR back in Sept., '59. She had served in secretarial capacities in Sales, Engineering, Executive Offices, Systems, Instruments, and Marketing, before electing early retirement in September. Gerry's busy social schedule is keeping her happily occupied, she says.

Karl Foltz, Receiving Clerk in our Traffic Department, elected early retirement from EMR effective Oct. 1, 1976. Karl had been in Production Control or Materials since May, 1966.

Liesbeth Sabbarth (Janitress, Plant Engineering) joined EMR in Sept., 1966, following a fascinating career as a circus performer. Now, after her early retirement, Lisa plans to travel to North Carolina for Christmas, and will probably visit Germany next summer.

All the best, friends, from your EMR colleagues!

## HAPPY ANNIVERSARY!



Chris Freeberg, Bill Black, Stan Sniffer

Three EMR men celebrated their 20th service anniversaries with EMR during 1976. Congratulations to Chris Freeberg, Senior Test Technician; Bill Black, Senior Contract Administrator, and Stan Sniffen, Contract Administrator.

All three men joined EMR in Ridgefield, Conn., and subsequently moved to Sarasota with their families when the company moved south in 1957. The three men received their Schlumberger service awards and presentation watches on their respective anniversaries.

## TAX WAGE BASE UP

Starting in January, 1977, the wage base for our Social Security tax goes up to \$16,500 per year, per individual. However, the rate remains 5.85% for both the employee's tax and the employer's matching tax contribution.

## BUSINESS NEWS BRIEFS

### CALLING DON QUIXOTE

Windmills are back in style. EMR equipment is being used to monitor an experimental Wind Turbine Generator sponsored by the Energy Research & Development Agency and NASA Lewis Research Center.



Experimental Wind Turbine

Two EMR Model 1510 Spectrum Analyzers are being used in the project's vibration analysis, and the Model 3200 Supervisory Control System provides remote control and monitoring of the windmill which is located 50 miles from the project office at NASA Lewis, Cleveland.

The ERDA/NASA 100 kW Experimental Wind Turbine is located at Plum Brook Station, Sandusky, Ohio. The test machine includes a rotor, measuring 125 feet in diameter, with two variable pitch blades. Operating at 40 rpm, it generates 100 kW of electrical power at a wind velocity of 18 mph. The assembly is placed on top of a tower 100 feet above ground level. \* \* \* \* \*

### BUTTERFLIES, TOO!

An EMR 1510 Spectrum Analyzer is being used at the Allyn Museum of Entomology in Sarasota in connection with research on the caterpillar stage (pupae) of butterflies. Sounds emitted by the caterpillar are being identified and classified with the help of the 1510 instrument.

The low frequency sounds are being amplified and studied, with a good possibility that the sounds relate to mating, hunger and group identification of the pupae. The single frequency sounds emitted by the caterpillars could be compared to the tuning fork of your electronic watch, according to the members of our Instruments Group. \* \* \* \* \*

-4-

## EMR EQUIPMENT IS USED IN MANY DIFFERENT WAYS

**DELIVERED TO GERMANY** -- Two giant containers--filled with an EMR telemetry/computer flight test system--left Sarasota en route to Germany in late November. The containers (8' x 8' x 24') provided a challenge to packers and shippers all along the way to Manching, Germany. The German Air Force will use the system for flight testing of MRCA (Multi-Role Combat Aircraft) and other aircraft.

Gerry Breyton, Manager of Sales and Service, reports it is the largest telemetry flight test system we have ever installed in containers. The EMR team which met the tight delivery schedule involved lots of EMR people, including Jack Cain, Joe Faso, Paul Weller, Sue Sutherland, George Phillips and his Systems Assembly group, plus installation and checkout in Germany by Dick Crete, Joe Faso and Pete Burnahm. Harry Durrett and others are scheduled to conduct the training sessions for the customer in Germany.



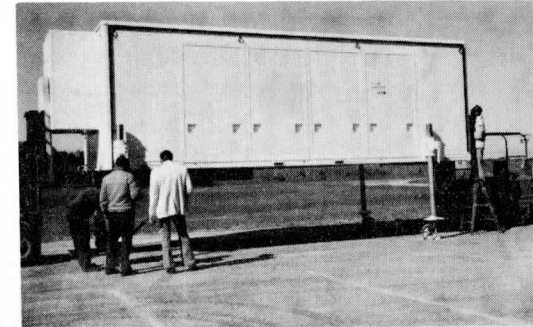
German Flight Test System, prior to installation in shelters-- Joe Faso moved so fast he was just a blur; Pete Burnahm, Joanne M...

### DATA ACQUISITION SYSTEM BUSINESS VOLUME MOUNTS

A railroad car, fitted with an EMR 420 Data Acquisition System, will soon be traveling across the continental United States and gathering railroad track profile data. The contract awarded to EMR by General Motors Proving Ground involves collecting data to redesign automobile carrier rail cars to minimize transportation damage when autos are shipped by rail.

A special instrumentation rail car will be brought to Fruitville where EMR personnel will help to install our system, according to Applications Engineer Dick Vorce.

Valued at over \$400,000, the system is similar in concept to other Model 420 Data Acquisition Systems, but unique in that it will be used in a rolling rail car environment. Delivery is scheduled for



Just before loading on flat-bed truck for shipment to Washington airport en route to Germany. \* \* \* \* \*

May, 1977. \* \* \* \* \*

Work is already underway on several other major Data Acquisition Systems contracts utilizing EMR's new 400 Series data acquisition standard products.

General Electric's Nuclear Energy Division, San Jose, Calif., awarded EMR a contract valued at over \$750,000 for two interrelated systems to be installed at a special testing facility being built in San Jose. The two systems will be used in gathering and analyzing data related to nuclear reactor safety under the high fluid flow conditions encountered in nuclear reactors.

EMR is supplying hardware, software, system integration, and training, according to Kent Morgan, Data Acquisition Product Line Manager. \* \* \* \* \*

## FROM ARCTIC TO ZAMBIA



EMR weather data products and systems are already spanning the globe, from the Arctic to Zambia. The new 30-foot dish antenna on EMR property is another visible proof of our weather activities. The big antenna gives us the capability of receiving pictures from a stationary weather satellite (GOES) some 22,000 miles from earth.

Customers for our weather data products and systems include the Air Force, Navy, NASA, NOAA, General Electric, plus overseas customers in Australia, Austria, Bangladesh, Mexico, Singapore, Sweden, Turkey and Zambia. \* \* \* \* \*

NEW SWS ORDERS--Additional orders from Schlumberger Well Services, Houston, during this year have mounted to a total of over \$1,200,000 worth of orders in build-to-print business for EMR.

Among the tools which EMR will build are Dump Bailer Actuators (DBA-B and DBA-D)--a tool used to place cement in the wells at specific depths--plus other contracts for Sonic Sonde Test Boxes and Auxiliary Test Boxes, the latter two used in testing various SWS tools and panels, according to Frank Bloechl, Product Line Manager for build-to-print projects.

### PITCHING IN TO HELP

A special tip of the EMR hat to Chris Papastrat and his many volunteers who made the EMR Picnic fun for everyone... and who have worked hard to prepare for the gala EMR Christmas Dance at the Hyatt House on December 18th.

-5-

## CB CRAZE HITS GROUP OF EMR "GOOD BUDDIES"

CB -- Citizen's Band radio -- has swept through the ranks of EMR employees. Some of our CBers and their "handles" (the names by which they identify themselves on the air) are:

Hercules - Dave Loverne  
Terrible Turk - Claude Smith  
Rat Catcher - Faye Lesmerises  
Mr. Bojangles - John Norton  
Lady Traveler - Bertha Casey  
Crew Cut - Keith Thatcher  
Fat Albert - Dan Toler  
Little Filly - Diana Denham  
Marco Polo - Chris Papastrat  
High Pockets - Wyatt Bishop  
Sea King - Clarence King  
Jayhawk - Glen Johnson  
King Pin - Terry Jackson  
Dr. Pepper - Joe Smith, Jr.  
Sleepy Joe - Joe Smith, Sr.  
Croom Hustler - Phillip Stockton  
War Lord - Larry Stewart

Colt - Dorothy Richey  
Cold Turkey - Ted Garrett  
Lady Cake - Nancy Wentz  
Clipper's Mate - Faye Bragg  
Mama Camper - Irma Jones  
Red Apple - Polly Smith  
Georgia Girl - Nina Van Tassel  
Q. C. - Rex Van Tassel  
Jesus Daughter - Mary Parker  
Sweetie Face - Cleo Brown  
Big John - John Thornton  
Sandpiper One - Carl Messman  
Bunny Mac - Richard McFarland

Carolyn Cox's son, Jim, signs off as "Lip Dipper from Skol Control," and she is "CB Mama."

---

## LOTS OF ANNIVERSARIES

Catching up on our service anniversaries, here are the EMR employees who observed major milestones in their EMR careers since March. Congratulations to:

### MARCH

15 yrs. - Rex Van Tassel, Dick Haase  
10 yrs. - Norman Siegel

### MAY

20 yrs. - Bill Black  
15 yrs. - Bud Steinhoff, Ruth Erlandson  
10 yrs. - Karl Foltz, Shirley Buerge,  
5 yrs. - Dick Ridgewell, Dave Cobb,  
Arnold Papanti

### JUNE

15 yrs. - Barry Barton, Ed Kucharski,  
Bill Hardman  
10 yrs. - Jon Altenbernd  
5 yrs. - Scott Blair, Cynthia Buckles,  
Nancy Helleis

### JULY

15 yrs. - Ed Caron, Helen Poirrier  
10 yrs. - Karl Salek  
5 yrs. - Thelma Summers, Bob Petrey,  
Vi Blair

### AUGUST

20 yrs. - Chris Freeberg  
15 yrs. - James "Pat" Patrick  
10 yrs. - Jim Horvath, Ron Vander Vliet  
5 yrs. - Tillie Erberfeld

### SEPTEMBER

15 yrs. - Doris Roberts  
10 yrs. - Tillie Castelletti, Milt Lippman,  
Lisa Sabbarth, Joe West  
5 yrs. - Larry Stewart, Tom Smeed,  
Wayne Lockwood

### OCTOBER

20 yrs. - Stan Sniffen  
15 yrs. - Wayne Brinton  
5 yrs. - Mary Milo, Alan Marion,  
Pearl Jennings

### NOVEMBER

15 yrs. - Dick Vorce, Claude Howard  
5 yrs. - Carolyn Cox

### DECEMBER

15 yrs. - Sam Gray  
5 yrs. - Bob Murphy

# 1977 IS EMR'S BIG 20TH ANNIVERSARY IN SARASOTA

Next year--1977--is EMR's 20th year in Sarasota. Twenty years ago this month, Sarasota newspapers carried prominent stories about an electronics company named Electro-Mechanical Research, Inc., which was moving to Sarasota from Ridgefield, Conn. Temporary quarters were engaged on Clark Road; training classes were inaugurated in cooperation with the Sarasota Vocational High School; plans were announced for the initial building (45,000 sq. ft.) of the EMR complex in the Fruitville area. Target date for moving into the new building was mid-1957.

On December 16, 1956, the first training class for electronics assemblers was begun at EMR's Clark Road temporary quarters, and soon thereafter Sarasota residents started joining the EMR payroll, along with key personnel who relocated from Ridgefield to Sarasota. On Dec. 14, 1956, the Sarasota Herald-Tribune welcomed EMR to Sarasota with the following editorial:

## Sarasota Milestone

The decision of Electro-Mechanical Research Inc. to build its new plant in Sarasota is a real milestone in the history of Sarasota. It marks this area's long-sought recognition as a desirable site for light industry.

To quote Roger Adams, the retiring chairman of the Sarasota Industrial Council, which aided the Connecticut firm in locating here: "Electro-Mechanical Research will unquestionably be a wonderful neighbor, a progressive influence and a great asset to this entire area."

This progressive firm came to Sarasota because of the uniquely attractive qualities of our community and the growing importance of Florida as an electronics and aeronautical center. It will bring engineers, technicians and other specialists. It will provide additional employment opportunities to our residents, and give new incentive to our young people.

The firm is like the ideal newcomer—who finds what he likes, buys it, and presents himself with self-respect as a new neighbor.

The lesson taught by EMR in locating in Sarasota could well set the standard for us in our future dealings with Florida-bound industries. Briefly, that lesson is—The finest light industries want the best communities—and we have the attributes to meet their requirements.

As we enter the *electronics age* let us welcome Electro-Mechanical Research, congratulate the Industrial Council and others who have cooperated to help bring EMR to Sarasota—and resolve to keep our standards as high as they are today.

## OVER 40 EMPLOYEES TO REACH 20TH YEAR SERVICE ANNIVERSARIES

More than 40 EMR employees are looking forward to their 20th service anniversaries with EMR during 1977. As part of EMR's observance of 20 years in Sarasota, plans are already underway for a special luncheon to honor those employees who will mark their 20th service anniversaries in 1977.

Tentative plans call for a luncheon to be held in June for those employees whose 20th anniversary dates fall during the first half of 1977, with a second luncheon, probably in December, 1977, for those employees marking 20 years with EMR during the second half of 1977, according to Personnel Manager R. C. Brogan.

In addition, EMR's traditional service awards will be presented to each individual completing 20 years with the company. The awards are Schlumberger service pins for the ladies and tie tacks for the men, plus a 20-year presentation watch, awarded to each employee on the occasion of the major milestone of two decades with the company. It appears 1977 will be a big year!

FIABBY

HOPE DAYS