



The EMR-Telemetry News
Sarasota, Florida

Vol. X, No. 7

July, 1975

BRUCE RANDALL WINS AWARD FOR HIS DESIGN

Bruce Randall, Engineering Technician in Applications Engineering, is one of the top ten prize-winners in the Motorola HEP "Design-In" contest.

His award is a \$250 check.



Bruce Randall
gets good news

Bruce's design of a "Voltage to Frequency Converter" was submitted nearly a year ago, and he was notified that he was one of the semifinalists--from about 1,000 entries. Last week he received an official letter telling him his design is one of two Third Prize winners in the Professional Category, and that a \$250 check is on the way.

Entries were judged by a panel representing the technical editorial staff of several electronics magazines, according to a Motorola spokesman. In addition to his prize, Bruce's design may also be published in a future issue of Motorola's Project Booklet, sold to hobbyists through Motorola's 1800 distributors.

What to do with \$250? "We're trying to build a house, so it will come in mighty handy," Bruce said.

ORDER VOLUME RISES FOR MONTH OF JUNE

Our June orders showed an encouraging trend, with orders totaling over \$2 million for the month, according to Marketing Manager Shelby D. Bass.

Major new orders include:

- U. S. Navy, El Centro, Calif. -- a telemetry/computer system for the National Parachute Test Range
- Hercules, Inc., Bacchus, Utah -- a remote data acquisition system for solid propellant rocket motor testing
- Martin Marietta Corp., Denver, Colo. -- telemetry transmitters.

July also started off well with a new order from General Dynamics, of Fort Worth, Texas, for a telemetry/computer system for the F-16 Fighter program.

\$ FROM CREDIT UNION

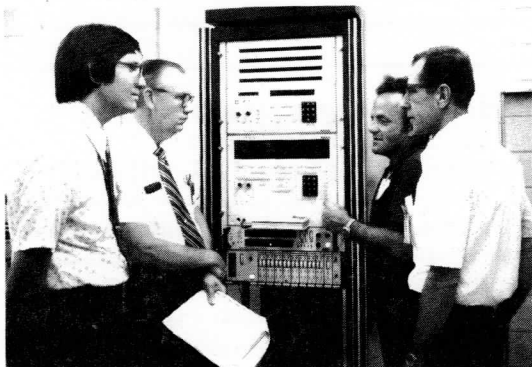
A 3% dividend for the first half of 1975 has been declared by the EMR Sarasota Employees Credit Union's Board of Directors. The dividend is the equivalent of an annual rate of 6%.

Net income for the period was \$11,655, of which \$9,200 in dividends is being credited to members' accounts. In addition to dividends, members automatically receive life insurance on all loans and shares. Life insurance on shares is limited to \$2,000.

BUSINESS NOTES---

CUSTOMERS IN FOR ACCEPTANCE OF EMR SYSTEMS

Customers visiting EMR's facility recently for acceptance testing of new EMR systems included representatives from Lockheed-Georgia and Martin Marietta, Orlando. Shown in the photos below are the systems and personnel involved, just prior to the shipment of the equipment:



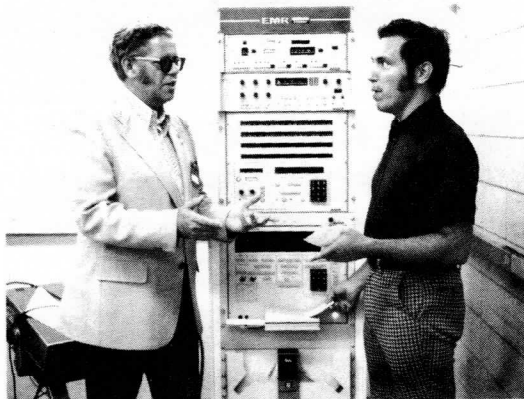
D. M. Hatcher, Senior Engineer, of Lockheed, and H. B. Fritz, Specialist in Electronic Design Department, Lockheed, are shown going through final test procedures with Joe Faso and Don Jones of EMR. The EMR telemetry decommutation system will be used by Lockheed-Georgia in ground station testing for missile checkout.

SUPERVISORY CONTROL AIDS IN OIL RECOVERY

A 3200 Supervisory Control system has been ordered for use in an advanced program aimed at recovering millions of barrels of oil in Wyoming via a steam injection secondary recovery project.

Coronado Oil and New England Petroleum are sponsoring the joint project to attempt to produce oil from this Wyoming area where extreme density of the oil and the basin formation makes recovery of the oil by steam injection even more difficult than it usually is.

The 3200 Supervisory Control system and software will assist in collecting the necessary data to evaluate the cost and feasibility of the project as pilot wells are drilled and later in monitoring production.



Carl Franzen, of Martin Marietta, Orlando, and Roger Mort, of EMR-T, check out the EMR 711/713 decom and display system. The EMR system will interface with other equipment in the Martin Automatic Data Reduction Equipment (MADRE) Lab. The MADRE facility is being updated.

SARASOTA BUYS UNIT TO MONITOR AIR QUALITY

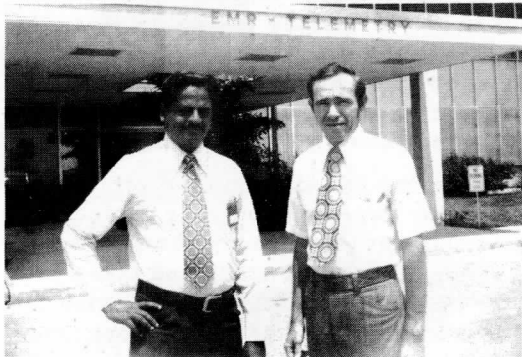
Sarasota County's Pollution Control Department has contracted with EMR-T to expand the environmental monitoring system which EMR delivered to the County in 1972. The new equipment will include a remote telemetry unit for monitoring air quality data.

The earlier system monitored water quality via two remote stations reporting in to a central station at the Department's Cattleman Road facility.

Included in the equipment going to the County is a special trailer to house the County's air quality instrumentation. Len Zeiler and Vic Boucher will do the modifications to the County's telemetry system.

INDIAN SPACE AGENCY USING EMR EQUIPMENT

P. S. Veeraraghavan, Project Engineer with the Indian Space Research Organisation, visited EMR this month to become better acquainted with EMR equipment. EMR units are being used in connection with the Indian scientific space effort.



P. S. Veeraraghavan, of India, with Harry Durrett, of Customer Service.

Mr. Veeraraghavan is based at the Vikram Sarabhai Space Centre, at Trivandrum. "Vikram Sarabhai was the 'father' of space science in India," he explained, "and the Indian Space Research Organisation is comparable to NASA. At the Trivandrum Space Centre we concentrate on the development of sounding rockets and the launch vehicles used in satellite launches for scientific research."

A variety of EMR units--PAM, PCM and FM equipment--are being used in check-out of launch vehicles.

"Van" -- as he is called by his EMR friends -- reports that the Americans he has met during this first visit to this country are "hospitable and kind." His business has taken him to the Boston, Washington and Sarasota areas.

"The Sarasota climate is very much like Trivandrum--warm and humid," he said. Trivandrum is located in the southwest corner of India, on the Arabian Sea, near the equator.

TRANSMITTERS ORDERED BY MARTIN MARIETTA

Martin Marietta Corp., Denver, Colo., has ordered a quantity of S-Band Transmitters for use on the Titan III program. Value of the contract is over \$600,000. Delivery is scheduled to begin in February, 1976.

EMR transmitters have "flown" on 68 straight successful Titan launches over the years.

The Titan has been a general purpose launch vehicle, supporting manned and unmanned space shots, such as Gemini, weather satellites, satellite observatories, the Viking program, etc. Usually the Titan launches carry one, two or three EMR transmitters on board to relay "housekeeping" data on the status of the vehicle during critical phases of the launch. The EMR transmitters must be ultra-reliable, since they are subjected to extreme environmental stress during the launches.



Finalizing the contract terms for an order for EMR Transmitters are: (seated) Bill Black, EMR Senior Contract Administrator, and Harry Miller, Senior Buyer, Martin Marietta Corp., Denver; (standing) Dick Vorce, EMR Principal Applications Engineer; Don Kendall, Senior Group Engineer, Martin Marietta; and Chris Papastrat, Manager, Quality Assurance, EMR.

TRY SOMETHING DIFFERENT FOR CHANGE OF PACE

Lots of EMR-T employees are vacationing in Florida this year.

There are beaches and fishing, of course, and nearby attractions--Disney World, Sea World, Busch Gardens, Circus World, Cypress Gardens, Stars Hall of Fame, etc. --plus other very pleasant activities most of us never get around to doing... picnics at nearby State Parks; visit the Ringling Art Museum; attend performances at the Asolo Theater; a gourmet tour to some really good area restaurants; a sightseeing boat trip around Sarasota Bay...

How about a canoe trip down the Peace River? You don't have to be an expert. It's safe, and loads of fun, according to a number of EMR-T employees who have tried it.

One adventurous group of twelve canoeists included EMR employees Caryl and Joe Faso, Nancy DuPlantier, Pat Power, Norma Davis, plus spouses, friends, and other family members. The group decided on a half-day canoe trip, plus picnic lunch and swimming in the Peace River in May.



First Stop

"Canoe Outpost" of Arcadia are the outfitters who arrange the canoeing trips. They provide Grumman canoes, paddles, life cushions, cooler and ice. They supply transportation upstream to the point where you put your canoe into the river, and can pick you up later at a pre-arranged time and place downstream. Cost is only \$10 a day per canoe (for two persons). Children under six are free, and those between 6 and 12 only \$2.50. You bring your picnic lunch, drinks and your own sun and rain gear.

A half-day or full-day trip takes from 3 to 7 hours, depending on your choice. Canoe Outpost loads you, your gear, and the canoes onto their truck and takes you as far up the Peace River as you wish to go--for a half day, full day or weekender.



Rich & Norma Davis and son Terry

The Engineering group enjoyed their half-day of paddling, swimming and picnicking, and even found wild orchids. Young Scott Faso shinnied up the tree to collect the blooms and gave them to the ladies.

To get your feet wet--literally--try paddling with Nancy and Ty DuPlantier. They found that trying to shove off from a water hyacinth plant is unsteady. Ty was dunked, and Nancy reports she fell in, too-- "But very gracefully! I didn't

CANOE DOWN THE PEACE RIVER



Finger-lickin' Joe Faso

alligators, plus some very pleasant, unspoiled countryside along the Peace River," Don said.



Mmm, COOL--Pat Power, Caryl Faso



CANOE OUTPOST, Base Camp
 Rt. #2, Box 301
 Arcadia, Florida 33821
 813 - 494 - 1215

PEACE RIVER CANOE MAP

Don Woodworth and his wife have tried the half-day trip on two occasions--most recently with house guests from Europe. "There were birds, turtles, and two



"Hiawatha" Pat Power & Ron McDeed

For the more professional campers, there's overnight camping, too. Don and Nancy Buffington, Chris and Hilda Papastrat, and two other couples tried a weekend canoe/camping trip in November. They left Friday afternoon and returned Sunday afternoon, supplying their own camping gear--tents, stove, lantern, sleeping bags, food, drinks. "We did the whole camping bit -- open fire, toasting marshmallows, etc.," Chris relates.

"Even a novice can learn the simple J-stroke to paddle the canoe," he said. "And the serenity is really beautiful."

INSURANCE TIPS

WHAT YOUR GROUP INSURANCE PLAN CAN DO FOR YOU

Group medical insurance is an important employee benefit--for you and your family. To help you get the most benefit from your insurance coverage, PULSE is passing along some insurance tips. Questions? Send them to Ruth LaCroix, of our Insurance Office, or call Ext. 322.

Q. *My daughter swallowed a quarter. Is that covered under the Emergency Accident insurance coverage?*

A. YES. "ACCIDENT" is the key word. Our "emergency accident" insurance coverage was improved recently. Emergency accidents--treated either at the hospital or at the doctor's office within 72 hours of the actual accident--are covered up to \$100 for emergency accident out-patient charges.

Remember, it has to be an accident. What is an accident? Cut fingers, broken bones, motorcycle accidents, animal or insect bites, a bone caught in the throat... These are "emergency accident" incidents, and when they require medical treatment within 72 hours, they are covered under our "emergency treatment" benefit.

What about other types of illnesses frequently treated at the hospital emergency room -- high fever, severe pain, heart attack, illnesses requiring prompt attention? These are not "emergency accident" cases, and do not fall within the "emergency treatment" coverage. These illnesses may be covered under the provisions of our Type A* or Type B* insurance benefit. Check with Ruth LaCroix, Ext. 322. to be sure.

*TYPE A -- Hospital expenses, surgery, etc. (After \$25 deductible, payment at 100% of next \$500, plus 80% of the excess eligible charges.)

Q. *I have a hospital "courtesy card" and my EMR-T insurance card. Which should I use when entering a hospital?*

A. Please use your EMR-T/Aetna group insurance card. It makes admission to the hospital easier. You will be responsible for the first \$25.00, but the hospital will take assignment of insurance benefits. (This means that the insurance company pays the hospital directly.) If, on the other hand, you use your "courtesy card," the hospital requires you to pay your bill within 30 days. It is obviously to your benefit to utilize the EMR insurance card.

Q. *The hospital and doctor's office told me they are sending the bills directly to the EMR Insurance Office. Do I have to do anything?*

A. Yes. To process any insurance claim, we must always have at least one Statement of Claim from the EMR employee. (Copies of the form are available from our Insurance Office.) If more information is needed, our Insurance Office will advise you. But, at the very minimum, we need a Statement of Claim, filled out by you, before EMR can send the certified claim to the insurance company for payment.

*TYPE B -- Other covered medical expenses after satisfying deductible of 1% of your basic annual earnings, rounded to next higher \$10. (\$50 minimum or \$250 maximum per person) Payment at 80% for reasonable and necessary charges.

MACHINE DESIGNED HERE IS TIME & MONEY SAVER

A new machine--designed and built in our Machine Shop by Bud Steinhoff and Paul Shetler--is saving EMR-T considerable time and money.

The Deburring Machine smooths the rough edges on aluminum and stainless steel parts, giving machined parts a smooth, professional look in our products.

"By utilizing the new machine for this operation, instead of manual deburring, we are getting better results," said Bud Steinhoff, Supervisor of Metal Fabrication. "Filing by hand was time-consuming and sometimes gave a wavy, uneven result--either too much or too little deburring."

The project originated with a visit to the Atlanta Tool Show last December, Bud said. "Dave Clouse and I saw deburring machines which were selling for about \$1800. We felt confident we could make a better unit for our needs at much lower cost, so Paul Shetler was given the 'spare time' project--build and assemble a deburring machine."

Bud and Paul worked together on the design. Only the motor and bearings were purchased, and the remaining materials were on hand in-house.

Paul Shetler explains how it works: a chain-driven motor turns drive wheels which push the metal part to be deburred over a stationary cutter blade. Only outer edge surfaces can be deburred, but the uniformity and speed are a great asset, Paul said.

Material cost for our machine was \$200--a nice saving, and our Machine Shop personnel are enjoying a useful, labor-saving unit.



Paul Shetler and Bud Steinhoff with new Deburring Machine.

AUSTRALIA BUYS SRDM

An initial order for EMR-T's new SRDM (Scanning Radiometer Data Manipulator) has been received from the Bureau of Meteorology of Australia. The SRDM is used in Automatic Picture Transmission stations to enhance the weather photos received from NOAA weather satellites.

ANNIVERSARY GREETINGS



Major service anniversaries during the month of July are being observed by Bob Van Doninck (10 years) and Shelby Bass, Roy Paxton, and Clarice Wynn, all marking 15 years with EMR. Congratulations!

PULSE - The EMR-Telemetry News

M. E. Herbst, Editor

Permission to reprint material herein may be obtained from the Editor, Pulse

COPYRIGHT © 1975 EMR, TELEMETRY, WESTON INSTRUMENTS, INC.

A SCHLUMBERGER COMPANY

WHO'S WHO

KEEGAN GETS IT ALL TOGETHER IN PRODUCTION

George G. Keegan, newly-promoted to the position of Production Manager for EMR-T, is a familiar figure to most long-time employees. He joined EMR in 1961 and has worked his way up through the ranks to the post of Production Manager.

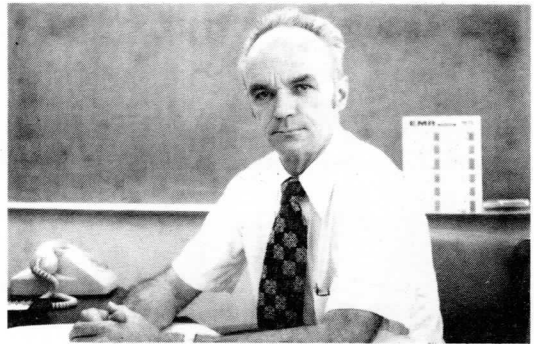
His job is to "get it all together" in Production. His responsibilities include all of Assembly, Printed Circuit Fabrication, Metals Finishing, Metals Fabrication, and Test. Involved are dozens of Production operations, complex scheduling, and hundreds of employees--plus interface with every department in the company.

For the past year he has been Acting Production Manager, so the position holds few surprises for him.

Born in Philadelphia, he moved to Stamford, Conn., at a very early age. He attended Stamford schools and the Wright Technical School for machine shop techniques. In World War II, he served as a Combat Medic in Europe--attached to a Medical Hospital Ship Platoon, Separate.

"We relieved battalion aid stations and served on hospital transport ships returning wounded to the U. S. A.," George reports. "I made 16 Atlantic crossings. Usually we had 200 or 300 patients, 15 Medics, one doctor and one dentist."

After military service, George worked for A T & T's Stamford Long Lines Division, maintaining central office repeater equipment. Later he was a John Hancock insurance underwriter for five years--"an excellent way to get to know people." Next he was Treater Foreman with New England Laminates, manufacturers of copper-clad printed circuit board material. George's position dealt



George Keegan

with treating the fiberglass material which was later pressed between the layers of copper to form the p. c. boards.

The Keegans--Dorothy, George, and four young sons--came to Sarasota in 1961, and George joined EMR. He was promoted to Foreman in Production in 1962.

"I've been in just about all the Assembly areas--racks, clean room, potting, special projects assembly units, Worldwide Range, standard product lines, and most recently digital and analog assembly."

All four sons are grown now--Leslie, a Registered Emergency Medical Technician with the South Trail Fire Control District; Dane at the Sarasota Bank & Trust; Ronald, self-employed in construction; Barry, installing cable TV lines.

George was elected to a two-year term as Fire Commissioner with the Fruitville Area Fire Control District. He's a do-it-yourselfer around the house. "We put in our own central heat and airconditioning and the duct work, at a saving of about two-thirds the regular cost," he reports. Dorothy and George enjoy family picnics at Myakka, and hike about a mile and a half every evening--relaxing recreation after a hectic day in Production.