

PULSE

EMR
Schlumberger



The EMR-Telemetry News
Sarasota, Florida

VOL. IX, NO. 1

JUNE, 1974

COMPANY PICNIC-- FUN AND GOOD FOOD FOR EMR FAMILIES

A large crowd of over 900 EMR employees and their families enjoyed food and fun at our big Family Picnic on June 1 at the Royal Coachmen Resort in Laurel. The pictures tell the story -----



NEW ORDERS AWARDED TO EMR BY SCHLUMBERGER

Three new orders for sophisticated logging tools used in the worldwide search for oil have been awarded to EMR-T by Schlumberger Well Services of Houston.

With these additional orders, total value of the several SWS contracts awarded to EMR during the past year now exceeds \$2,000,000, according to W. T. Long, Vice President and General Manager.

The three new orders consist of:

1. An add-on contract for additional Microlog Proximity Cartridges and related tools (similar to the SWS tools that EMR has been building since 1973.) This add-on contract is valued at over \$600,000.
2. A new order for nuclear tools, including quantities of 25 each of Compensated Neutron Cartridges and other related items.
3. Another order is for a set of 25 each of Scintillation Gamma Cartridges and other related tools, used in detecting natural gamma rays emitted by earth formations in bore holes.

These advanced nuclear tools are among the variety of tools which Schlumberger uses to provide technical services to their clients around the world in the intensified search for new energy sources--hydrocarbons (oil and gas). The down-hole tools are used in the bore holes at well drilling sites, both on land and offshore.

Schlumberger's oil well logging techniques involve taking measurements in the drill hole and sending the signals to the surface for a graph (log) display to indicate the types of geological strata in the bore hole and the likelihood of finding oil and gas.

Data collected includes information such as the permeability of the strata found in a particular well hole; resistivity measurements to determine how porous the rock (or other) formations are, and consequently how much of the void, or porous space, could contain hydrocarbons.

Compensated Neutron Tools

First of the two SWS nuclear contract awards includes the following items to be built here:

- CNC - Compensated Neutron Cartridge
- CNP - Compensated Neutron Panel
- CNH - Compensated Neutron Housing

Inside the CNC (cartridge) is a nuclear source (plutonium beryllium or Americium beryllium) which is installed at the well site. At EMR, we will have a very small, low-rated nuclear source--the size of a pill--which will be used only for testing the equipment here.

A special training course will be given to some EMR employees in the proper handling of this material. The amount of radioactivity involved in the small nuclear source here will be equal to 1/2 curie or less.

State licensing is required, and proper handling of the small nuclear source will make for a safe operation for all personnel.

Scintillation Gamma Tools

The second of the newest awards for SWS nuclear tools includes the following items to be built here:

- SGC - Scintillation Gamma Cartridge
- SGD - Scintillation Gamma Detector
- ECH - Electronic Cartridge Housing

Frank Bloechl, Senior Manufacturing Engineer, will again serve as Program Manager for the SWS contracts.

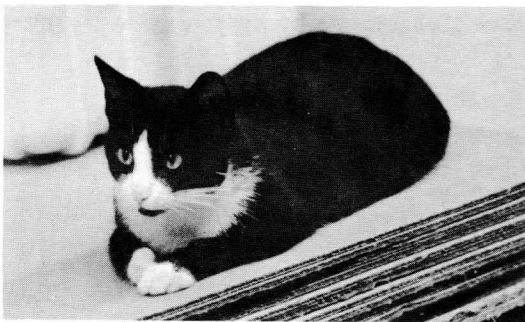
PULSE - The EMR-Telemetry News

M. E. Herbst, Editor

Permission to reprint material herein may be obtained from the Editor, Pulse

COPYRIGHT © 1974 EMR TELEMETRY, WESTON INSTRUMENTS, INC.
A SCHLUMBERGER COMPANY

"BIG MOMMA" ADOPTS EMR



"Big Momma"--a handsome black and white mother cat--has adopted EMR-T and presented us with two litters of kittens in recent months. Only two playful kittens remain for adoption. Several kind-hearted employees are making sure that Big Momma and her young are well cared for. (Photo by Don Bolt)

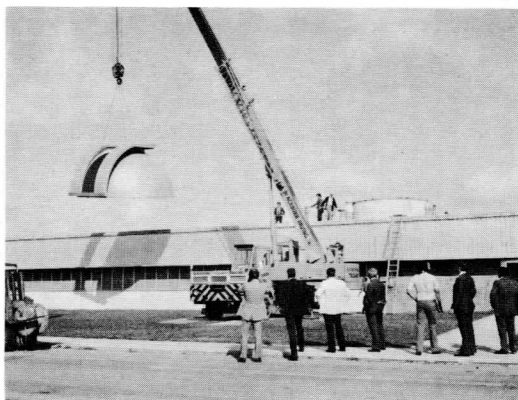
ANNIVERSARY GREETINGS



Standing: Don Jones, Lillian Pridgeon, Gerry Ecker and Milt Litwiller, who recently observed 15 years of service with EMR; Seated: Bill Gregory, Armand Cheramie and Stan Krosley who celebrated 10-year anniversaries. Frank Guinn and Dave Clouse (not in photo) also marked 10th anniversaries recently.

Five-year service milestones were reached by: Jim Apperson, Bob Bush, Cindy Butler, Dennis Funaiole, Bud Hinkel, Gerry Maki, Bill Salter, and Rose Stroface.

REMOVING THE DOME



EMR-T's astronomical dome, which sat atop our Engineering Building for many years, has been donated to Florida Institute of Technology, Melbourne, for the college's physics and space sciences program.

The dome had been installed here some years ago when EMR was more heavily involved in electro-optics.

ENGINEERS WRITE PAPERS

Technical papers prepared by EMR-T Engineers recently include the following:

"Power Spectrum Measurement Accuracy Considerations Using Modern All-Digital Analyzers," by J. L. Lehmann (ISA Conference in Albuquerque, May)

"A Practical Comparison of PSK Demodulation Techniques" by W. M. Waggener (IEEE Southeast Con - '74, Lake Buena Vista, May)

"Time Correlation of FM Data Among Tracks of an Instrumentation Tape Recorder," by R. J. Haase (EMR Application Note)

"Eight Channel Data Set for Clinical EEG Transmission over Dial-up Telephone Network" by R. G. Vorce, R. M. Gardner and D. M. Bennet (IEEE Transactions on Biomedical Engineering, May)

GAS SAVERS SAY MOTORBIKES ARE THE WAY TO GO --

Many of EMR-T's ingenious employees have become Gas Savers by switching to motorbikes for commuting to work, and for pleasure cycling, too.

Motorcycles or motorbikes are "in." Mileage ranges from 42 to 100 miles per gallon, depending on size and weight; prices of the machines go from \$500 to \$4500.

"My old gas-eater (a standard-sized car) took \$15 worth of gas a week. Now my Honda 750 takes less than \$2 a week," reports Larry Stewart of our Machine Shop.

In our Machine Shop area we have Paul Shetler on a Honda 175; Bud Steinhoff, a Suzuki 400; Ronald Rowe, Suzuki 250; Steve Lewis, Yamaha 360; Richard McFarland, Suzuki 250; Ted Garrett, a Suzuki 750; Jim MacFarrell, Harley Davidson 1200; David Cobb, Suzuki 185; Bill Whaley, Suzuki 100. Alan Marion, of Q. C., rides a Suzuki 500.

Employees in Accounting score big on the motorbike scene: Dora Clayton commutes about three days a week on her Honda 175. When Kit Cameron (who commutes from Palmetto) switched from a pickup truck to his Honda 350, he went from \$25 to \$3 a week for gas. Jon Bebeau has a Kawasaki 175; Mike Alexy, a Hodaka 125. Lillian Conway uses her Honda 200 to travel to Cape Haze on weekends to visit her Mother -- "with my 71-pound son riding on the back!" says Lillian.



Lillian Conway, Dora Clayton, Jon Bebeau, Kit Cameron, Patsy Carter and Cindy Butler -- all cyclists.



Larry Stewart, Mac McFarland, Alan Marion and Paul Shetler have all switched to motorbikes.

Cindy Butler, of the Credit Union, rides her Yamaha 125 weekends. Patsy Carter, of Assembly, commutes from Bradenton on her Indian 100.

From our Engineering Building, cycle riders include Ed Domrzalski on a Yamaha 75; Bruce Randall on a Bultaco 250; Mike Russell, Honda 200; Chuck Netherton, Honda 750; Bob Serina, Honda 160; Jon Altenbernd, Honda 450; Joe Lehmann, a Triumph 220; Tom Bray, Honda 350; Jack Cain, Honda 100; Wiley Dunn, Suzuki 250; Milt Litwiller, a DKW 125; Joe West, Honda 175; Terry Briggs, Triumph 650.

George Phillips rides a Suzuki 380, and Dick Crete a Honda 450.

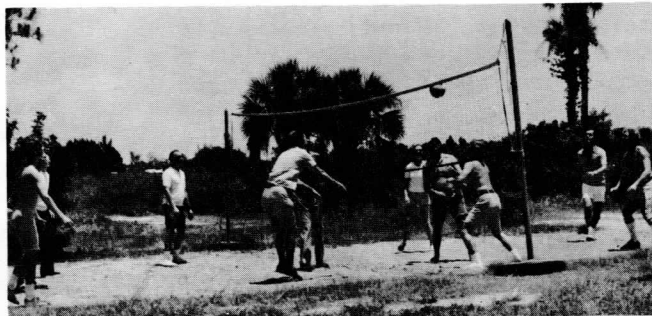
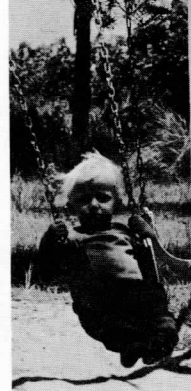
Is it dangerous? "Safety is improving," says Paul Shetler, "because with more motorcycles on the road, auto drivers are increasingly aware of cyclists and are using more care."

Among Test employees we have Bob Petrey on a Honda 350; Olen Harris, a

(Continued in next column)

PICNIC

(Continued from Page 1)



GAS SAVERS (Cont'd.)

Honda 450; Lonnie Gunter, Indian 125; Nick Ostrye, Yamaha 175; Bill Bruno, Suzuki 125.

And more join the ranks every day. All motorbike riders agree, "It's fun and it's economical."

BUT, if you really want to save gas, see the dozen or so EMR employees who peddle their bicycles to work!

CRASH TEST SYSTEM ORDERED BY FORD

Ford Motor Company, Dearborn, Mich., has ordered an EMR-T vehicle test system to be used in high-speed destructive crash tests. The small, rugged, vehicle-borne package will provide data on the forces experienced by the vehicle and occupants during crash testing--including information on vertebrate structure, neck bending/flexure, what happens to knees, etc.

An EMR-supplied ground support control console, built around an electronic calculator, automatically sets up and checks the status of all data channels during the tests, according to Dick Vorce, FDM Product Line Manager. Fall delivery is scheduled.

DON TURRELL NAMED TO LEAD INDUSTRIAL PRODUCTS GROUP

Donald K. Turrell has been named Manager of the Industrial Products Group stationed at EMR-T in Sarasota.

His responsibilities include product planning, new market identification, application engineering, and sales for a line of utility-oriented devices. He reports to Marketing Manager S. D. Bass.



Power Protection Products, already being marketed in this country under the Weston name, include a complete line of protection relays, and overhead line fault locators. In addition, remote data collection systems and pollution monitoring and control systems will also be handled by the Industrial Products Group.

Personnel in the Industrial Products Group currently include Power Protection Product Line Manager Pete Farinas, and Industrial Data Systems Product Line Manager Bill Hardman.

Mr. Turrell came to EMR in Sarasota from G. W. Danek, Needham Heights, Mass., a sales representative firm. Earlier he was National Sales Manager, Harris Intertype, Melbourne, Fla.; District Sales Manager for Sangamo Electric Co., Springfield, Illinois, and with GE, Huntsville, Ala.

Mr. Turrell and his wife, Jean, are the parents of three children.

**Before I joined the
Payroll Savings Plan
all I could save was**



string.

POWER PROTECTION GROUP DELIVERS EQUIPMENT

The Power Protection Group has delivered a fault location system valued at approximately \$11,000 to Consolidated Edison Co., of New York. The system will be used in an 18-month evaluation study to be conducted in Westchester County starting July, 1974.

Fault Locators automatically detect and display the distance in miles from a utility substation to a point of fault (short circuit) on a high voltage transmission line.

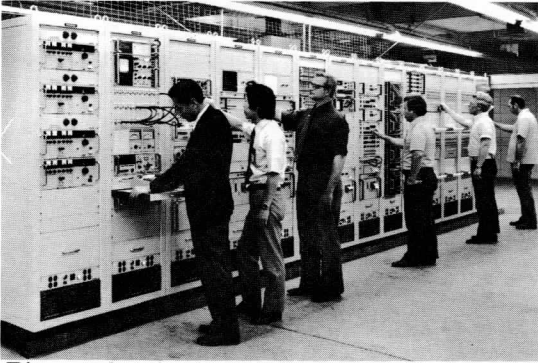
Another system, similar to the Con Ed one, has been in service at the Public Service Co. of Colorado, Denver, since March 15. Operating results to date have been very positive, according to Pete Farinas, of Power Protection Marketing. Additional orders for rack-mounted PPG equipment are expected shortly from Duke Power Co., Florida Power and Light, and Florida Power Corp., Pete said.

18 COMPLETE PCM COURSE

Congratulations to the 18 EMR-T men who successfully completed a six-months-long EMR PCM Logic Course. The class was taught evenings at EMR in cooperation with the Sarasota Vocational-Technical School, with Jon Brown and Harry Durrett as Instructors. Subject matter included the basics of telemetry and PCM, from data acquisition through computer processing.

The graduates are: Jim Apperson, Tellie Bates, Vic Boucher, Bill Bruno, Bill England, Simon Ford, Gene Harbert, John Lindsey, Jim Maguire, Wayne Norman, John Norton, Larry O'Connor, Jake Sims, Gary Snyder, Dick Van Deusen, Ron Vander Vliet, Dave Walker, Jim White.

SHIPPED TO JAPAN



Pictured prior to its shipment to Japan is one of the largest single systems ever produced by EMR-T. This 14-rack ground checkout system is now being installed in Japan at the Tanegashima Island launch site where it will be used by Japan's National Space Development Agency for checkout of N and Q rockets -- part of the Japanese peacetime space effort involving scientific and communications satellites and launch vehicles.

Over a million dollars worth of EMR-T equipment has been ordered for use in the Japanese space program, according to Gerry Breyton, Export Sales Manager.

INSTRUMENTS ORDERS UP

Orders for EMR instruments reached a new high in early June, according to Dick Ridgewell, Instruments Product Manager.

One outstanding performer is EMR's 1510 Real-Time Spectrum Analyzer. Ten of these units are currently at work at GE's Evendale, Ohio, jet engine facility, assisting in vibration testing of engines.

"The all-digital unit's fool-proof precision, ease of digital interface, and well-designed front panel have made it highly useful in jet engine applications, and we expect more orders from the jet engine market," says Dick Ridgewell.

JUST LIKE DR. K.

Dr. Kissinger has nothing on EMR when it comes to foreign travel. Our brisk export business has brought visiting foreign representatives to EMR and sent EMR-T employees abroad.

Recent plant visitors came from India, Japan, Italy, Brazil, France, Poland, Germany and England. In turn, business requirements caused a number of EMR employees to travel to Italy, Japan, England, France, India, the Scandinavian countries, Canada, Mexico, and South America.

WESTINGHOUSE ORDERS EMR SYSTEM FOR GAS TURBINE DEVELOPMENT CENTER

Westinghouse Electric Corp. has selected EMR-T to provide a computer-controlled data acquisition and processing system to be installed in Westinghouse's new Gas Turbine Development Center, Concordville, Pa. The contract is valued at \$300,000.

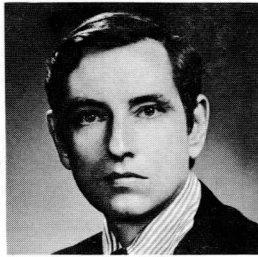
EMR's system will provide real-time analysis capability for design engineers conducting development tests on turbine system parts such as compressors, combustors, turbines. The system will also be used by the Gas Turbine Systems Division to process and analyze data gathered from turbines installed at electric utility company locations.

Data on temperature, pressure and strain will be gathered from some 1500 sensors and the information acquired, processed and selectively displayed under computer control.

This is EMR's first major venture in computer-controlled data acquisition in the basic power generation industry. The system is scheduled for fall delivery.

R. WENDELL GOODWIN HEADS ENGINEERING

Introducing our new Director of Engineering, R. Wendell Goodwin:



Mr. Goodwin comes to EMR from Norden Division of United Aircraft Corp. Norwalk, Conn., where he was Chief of Commercial and Industrial Products Research with responsibility for developing products in the communications systems and industrial automation equipment markets.

"Mr. Goodwin's experience in commercial and industrial business segments will add a further dimension to our diversification abilities," said Vice President W. T. Long.

In his 13 years with Norden, Mr. Goodwin's engineering responsibilities also included design of inertial navigational systems, radar systems, video displays, electro-optics and laser systems. Earlier he was Project Engineer with Bendix Corp., and Colt Industries.

Mr. Goodwin has a B. S. degree in Physics from Bowdoin College, and his Master's in Electrical Engineering from the University of Bridgeport. He also served as Adjunct Lecturer at the U. of Bridgeport's Graduate School of Electrical Engineering. He holds seven patents, including the basic patent on the guidance system for the Lunar Excursion Module, and currently has three patents pending.

He is a native of Hartford, Conn. Wendell and Eleanor Goodwin have three children: Peg, 13; Todd, 8; and Reed, 4.

For relaxation Mr. Goodwin plays guitar, piano and organ. His other hobbies include fishing and chess.

SALES MEETING HIGHLIGHTS

When our Salesmen gathered in Sarasota for their annual briefing earlier this year, awards were presented as follows:

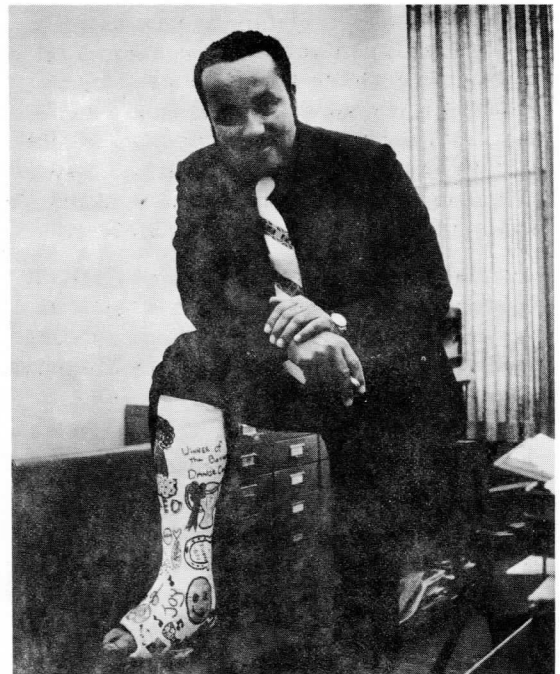
1973 Salesman of the Year - F. V. (Bud) Hinkel

Million Dollar Club for 1973:

Wyatt S. Bishop Robert E. Sayre
Forrest V. Hinkel John M. Sherman
Carl R. Steineckert

Congratulations to these men and all our Sales force for their good performance in 1973.

* * * * *



"Cast of the Year" Award (if there were such an award) would have gone to Cephus Mason, Senior Sales Engineer in our Los Angeles Sales Office, for his brightly decorated foot cast, painted by his daughter, Joy. Cephus also had a zippered trouser leg so that he could display the artistic cast... How did he break the bone in his foot? He claims he did it to himself while dancing with his wife!