

PULSE

EMR
Schlumberger



The EMR-Telemetry News
Sarasota, Florida

Vol. VIII, No. 3

NOVEMBER, 1973

RESERVE YULE DANCE TICKETS BY DECEMBER 4

EMR's festive, traditional Christmas Dance is set for Saturday, December 8, at 9 p.m., at the attractive new Longboat Key Holiday Inn. All reservations must be in by Tuesday, December 4. Music will be by LAVA, a four-man combo.

A new, special feature of this year's Christmas party is a dinner buffet from 7 to 9 p.m., preceding the dance.

An active group of employees has joined with Chairman Rich Brogan and Co-Chairman Carl Weinrich to make up our Dance Committee:

TICKETS:

- Admin. Bldg., Ruth Erlandson.
- Mfg. Bldg., Dorothy Martin, Daryl DeLoreto, Janice Johnson, Simon Ford, Jim Rexrode, Keith Thatcher.
- Eng'g. Bldg., Nancy DuPlantier, Ed Domrzalski, Kathy Boley, Norma Davis.

Other Committees include: Hospitality, Debbie Smiseth; Prizes, Pearl Point; Decorations, April Benson, Mary Caseber, Janice Johnson, Arlene Ploegstra, Jim Graham; Entertainment, Angie Pritchard.

Dance tickets are free to all employees and their spouses or dates. Guest tickets are \$6 per couple, \$3 per person.

Reservations for the Dinner Buffet at \$7 per person (includes tax and tip) must be in by Monday, Dec. 3. A guaranteed minimum of 50 persons is required.

GET YOUR RESERVATIONS IN EARLY!

GOLF WINNERS



Preston Cox, Skip Bailes and Don Norris admire the EMR plaque which will record the winners of future EMR Golf Tourneys.

First to have their names engraved on the plaque are: Preston Cox (Low Gross) and Don Norris (Low Net)--top golfers in the EMR Open Golf Tournament held at Rolling Green Golf Course on Nov. 3. Runners-up included Dave Wiegand, Dave Colin, and Chris Papastrat. Some 40 EMR golfers, including 9 ladies, enjoyed the day of golf which featured a Beer Cart presided over by Carolyn Iezzi and Angie Pritchard, lots of golf ball prizes, and luncheon at the Pirate's Inn. More EMR golf tourneys will be scheduled in the future according to Tourney Chairman Skip Bailes.

B-U-L-L-E-T-I-N

At press time, it was announced that Schlumberger Well Services of Houston has awarded EMR-T an additional contract for the manufacture of sondes and tools utilized in well logging in the amount of \$1,000,000. More on this next issue.

MAJOR RENOVATIONS TAKE PLACE IN PRINTED CIRCUIT

A major renovation project to update and improve our Printed Circuit Fabrication facility is now underway at the west end of the Production Building.

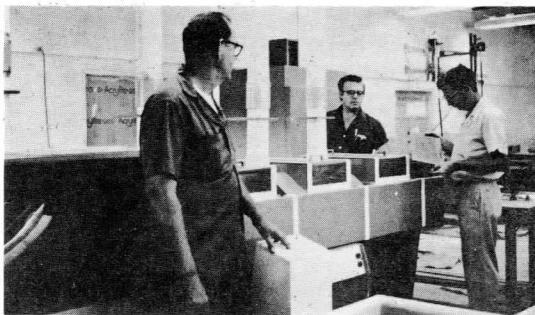
"Our two main goals in doing this extensive redesign are: improved working conditions and increased production capability," says Fred Stiefel of Production Engineering.

Because high quality printed circuit boards are an integral part of most EMR-T equipment, the work now being done in our Fabrication area is vital to all of our products.

Much progress is already visible in the PC Fab area, although the entire project will not be complete until early in 1974.

The Printed Circuit Fab facility has been expanded to 5100 square feet of working area. Additional and updated equipment is being installed; more efficient flow of work is being implemented, and new processes incorporated to keep abreast of the state of the art.

Under the heading of improved working conditions are the installation of a noise-absorbing ceiling; acoustical panels around



Etching-- John Thornton, Bill Rundels and Clay Osgood at new Chemcut Etching System. The system is the latest addition in the Chemical Processing section of our Printed Circuit Fab facility.



New Layout in PC Machining Area -- A partial view of improved Machining area shows Ann Stinton, Pat Lahmers, Barbara Ames, Rita Jeannette, Judy Stolz and Kathleen Jung at work.

noisy equipment; and a new central dust collector system, with the main unit located outside the plant.

The Chemical Processing and Plating area is now separated from the Machining area. Installation of a new ventilating system in this area is also scheduled.

Three major rooms now make up the large L-shaped area:

Photo Resist Room: Renovations and new layout completed. New equipment, such as Scanex Exposure unit, installed.

Machining Area: Improved layout for better work flow. Central dust collector system and noise-absorbing ceiling have been installed. Painting and acoustical panels remain to be done.

Chemical Processing and Plating: Work underway. Some new equipment, such as new Etching System and new sink, already installed. New tanks, new ventilation

PULSE - The EMR-Telemetry News

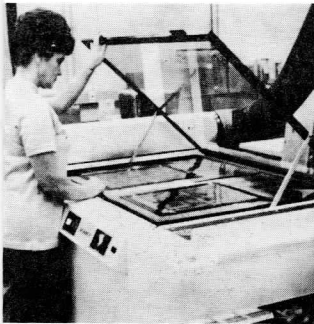
M. E. Herbst, Editor

Permission to reprint material herein may be obtained from the Editor, Pulse

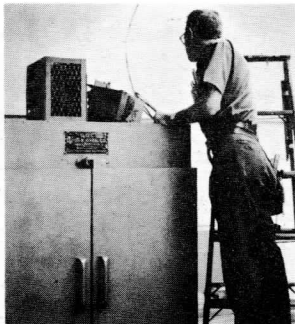
COPYRIGHT © 1973 EMR TELEMETRY, WESTON INSTRUMENTS, INC.

A SCHLUMBERGER COMPANY

FAB FACILITY



Helen Poirrier at new Scanex Exposure unit in Photo Resist Room. Via this machine, Helen transfers printed circuit pattern to photo resist for development--part of printed circuit board manufacturing process.



Plant Facilities employees are working on PC Fab renovations. Here Glenn Campbell takes care of electrical hook-up of an oven in the Chemical Processing area.

system, and remote-controlled rectifiers are scheduled for installation.

Most of the renovations, including major electrical modifications, painting, etc., are being done by our busy in-house Plant Engineering Department.

Fred Stiefel and Bob Bush, of Production Engineering, cooperated in planning the improved design and layout. And together with Facilities Engineering Manager Dutch Fontaine and P. C. Fab Foreman Bill Rundels, they have scheduled these renovations so that our Printed Circuit Fab employees continue to produce quality printed wiring boards to meet our customers' demands as the renovations proceed.

HAPPY ANNIVERSARY-- Major service anniversaries in November are:

1953 - John P. Moore, Sr.

1968 - Wiley E. Dunn

PLEASE GIVE TO THE UNITED APPEAL
-- Your one gift helps many! --

The United Way

JOHN MOORE FETED ON 20TH ANNIVERSARY



John Moore received his 20th service anniversary award and gold watch recently. Congratulating him are Vice President and General Manager W. T. Long, Procurement Manager Sam Gray, John Moore, and Personnel Manager R. C. Brogan.

When John Moore joined EMR in Ridgefield, Conn., in November, 1953, there were about 75 employees in a three-story house on Main Street.

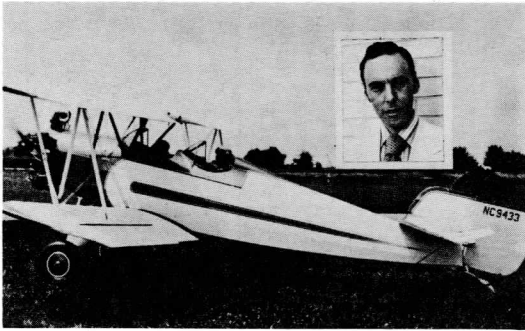
John is currently Subcontract Administrator in Procurement. Recently, on his 20th anniversary with EMR, he noted some of the changes in purchasing operations over the years: "We now have rapidly changing companies among our suppliers; vendors make frequent personnel changes; we encounter more delivery problems. Materials and components we need are in short supply. New technologies and rapid obsolescence make changes seem even more rapid. A simple re-order becomes a problem when the supplier tells you he doesn't make that item any more!"

John and Kate Moore have three grown children--Carol is married, has one son and lives in Houston; Jim is in Woods Hole, Mass.; Jack is married and in Pennsylvania.

A native of Southampton, N. Y., John Moore attended Syracuse University. The Moores enjoy Florida and don't miss the cold Connecticut winters a bit!

THINGS EMR PEOPLE DO IN THEIR SPARE TIME!

... BUILD A FLYING MACHINE



Taxiing for take-off in his 1929 FLEET biplane is Jerry Reider, EMR-T's Washington D. C., Representative. Jerry, an antique airplane enthusiast for years, restored the 1929 biplane himself, a project which took him about five years of hard work in his basement.

"Please don't ask me how I got the plane out of the basement!" Jerry pleads. The restoration is faithful to the original design except for the substitution of a tail wheel instead of a tail skid and radio.

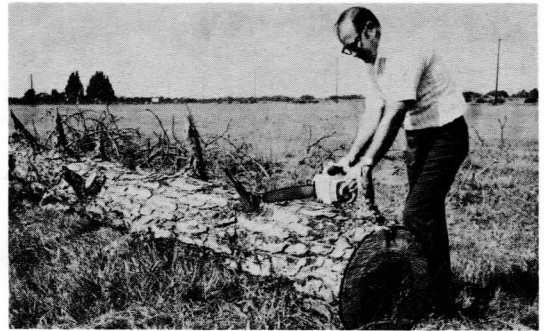
Complete with helmet, goggles and scarf, Jerry flies his antique machine for fun. He captured a trophy for best vintage biplane in a Virginia antique airplane meet this summer.

"The airplane cruises at 75 knots and has an altitude ceiling of 11 or 12,000 feet. It gets pretty chilly in the open cockpit," he says. Jerry estimates his plane is probably worth about \$15,000.

LAST CALL

Many EMR-T employees are increasing their contributions to the Schlumberger Contributory Investment Growth Plan in order to take advantage of the benefits of this Company savings plan. If you wish to change your contribution to the Growth Plan, the deadline is this week. Call Ruth LaCroix, Ext. 322, for details.

... OR CHOPPING WOOD



John Brady, Senior Contract Administrator, is meeting the energy crisis by cutting fire wood for his fireplace. The tall slash pine tree on EMR property had been struck by lightning over a year ago and was dead.

"I thought it would be good exercise to cut some kindling, so I got permission from EMR to saw up the tree and take it home," John explains.

Besides using his power saw, John is putting some muscle into the project -- carting home the logs and then splitting the wood with a wedge and sledge hammer. And he has the blisters on his hands to prove it.

"I guess I'll probably spend about 30 hours of my spare time on this wood, but it's really great relaxation," he says.

SPREADING THE WORD

Don Woodworth, Principal Engineer in R & E presented an EMR paper entitled "Recent Developments in Tunable PCM Bit Synchronization" at the National Telecommunications Conference in Atlanta this week. The paper emphasizes techniques used in our Model 720 PCM Bit Synchronizer.

* * * * *

Jerry Radwell, EMR Instruments Sales Representative, spoke on "Real Time Spectrum Analysis" at the ISA Seminar on November 15 at Cocoa Beach.