

PULSE

EMR
Schlumberger



The EMR-Telemetry News
Sarasota, Florida

Vol. VII, No. 11

30 March 1973

GROWTH PLAN TOTAL NOW OVER \$1,000,000

A profitable 1972 enabled EMR-T to increase Company contributions to the Schlumberger Contributory Investment Growth Plan for 1972. Our Growth Plan total assets for EMR-T employees exceeded \$1,000,000 at year-end.

Growth Plan statements which were distributed to employees this week showed EMR-T's contribution rose from 25¢ to 35¢ for each \$1 contributed by the employee in 1972. Earnings of the Trust (Trust investment income and appreciation) amounted to better than 10% on the 1971 year-end balance.

The Schlumberger Contributory Investment Growth Plan, one of our major employee benefits, provides a form of savings for all employees.

The Growth Plan consists of individual employee contributions, Company contributions, earnings (investment income and appreciation), and a previous balance which also includes assets of our old Profit-Sharing Plan.

Details of the Growth Plan are available in a booklet entitled "Your Retirement Benefits." The booklet includes information about the Schlumberger Retirement Plan and the Growth Plan. If you have any questions about the Growth Plan, please call Personnel, Ext. 322.

For a financial summary of the Growth Plan, please see the back page...

MORE EMPLOYEE NEWS SOUGHT BY REPORTERS

Reporters have been named from all EMR-T departments to provide broader coverage of employee news for PULSE. As your news correspondent, your Department Reporter will be a convenient contact point for passing your news items to our employee publication and employee bulletin board. Reporters will welcome inputs about your Department and your colleagues' activities here and in the community.

Pictured are the new PULSE Reporters:



Don Buffington, R & E; Larry Dunham, Quality Assurance; Jerry Johnson, Instruments; Jo Snyder, Production Control; Gerry Ecker, Marketing; Judy Williams, Administration; Georgette Busick, Procurement; Pervis Sanders, Production; Mona Nainby, Plant Engineering; Rosemary Williams, Manufacturing Engineering. Missing was Cindy Drobisch, Accounting.

SIMFIRE TESTING



Capt. Matt D. McKnight, Randy Schaub, and First Lt. Robert K. McBride are shown here with a portion of our Simfire system during the Army Project Officers' visit in Sarasota.

Simfire is a weapon effects simulator designed to provide realistic field training for military tank crews. Capt. McKnight and Lt. McBride, of Ft. Knox, Ky., visited EMR-Telemetry recently in connection with the U. S. Army's military potential testing of the Simfire system.

Randy Schaub is our Project Engineer for Simfire. The system, originally designed in England by Solartron (a Schlumberger company), is being "Americanized" here to meet U. S. military requirements.

ANNIVERSARY GREETINGS

Congratulations to the seven employees observing their tenth service anniversaries in March, and two who reach their 15-year mark. They are:



10 years: (from left) seated, Emma Green, Delta Wildermuth, Julie D'Amelio; standing, Charles Harris, Stu Ulfers, Claude Smith and Joe Barnett. 15 years: at far right, Margaret Herbst, George Phillips.

T/C CONTRACTS AWARDED

Two major contracts have been awarded EMR-T for telemetry/computer systems valued at over \$800,000.

The Boeing Company, Seattle, Wash., has ordered a dual-computer telemetry system for use in processing flight test data. Picatinny Arsenal, U. S. Dept. of the Army, Dover, N. J., has placed an order with EMR for a Telemetry Support System to be used in their data processing center for projectile tests.

Both contracts call for PDP 11/45 computers (produced by Digital Equipment Corp.) to be combined with EMR telemetry equipment and software (computer programming) here in Sarasota before delivery to the customer later this year.

Ed Kucharski is Program Manager for the Boeing T/C Program, and Dave Colin is Project Engineer for the Picatinny system.

de soto news

Manatee County's DeSoto Celebration last week got an assist from EMR employees: Tracey Hardy (Material Control) designed and supervised the building of the American Legion Junior Auxiliary float. . . Jo Snyder (Production Control) painted young "Indians" for the DeSoto Landing re-enactment. . . Mark Haas (Material Control) was the M. C. for the Palmetto Children's Parade in connection with the DeSoto festivities. . . Doris Sterling (Traffic) is the proud mother of a 15-year-old DeSoto Celebration Junior Princess. Her daughter, Sharon Crowl, took Junior Princess title in a teen-age contest.

PULSE - The EMR-Telemetry News

M. E. Herbst, Editor

Permission to reprint material herein may be obtained from the Editor, Pulse

COPYRIGHT © 1973 EMR TELEMETRY, WESTON INSTRUMENTS, INC.
A SCHLUMBERGER COMPANY

who's who

"COMMODORE" BILL BLACK HEADS BOATING CLUB

Bill Black, veteran EMR-T employee and known to us as a Senior Contract Administrator in Administration, has another title -- Commodore of the Sarasota Outboard Club.

The boating club has 108 member families and Bill completes his one-year stint as head of the busy group in April. SOC is 18 years old and has its own air-conditioned club house on City Island, with docks, launching ramp, and outside picnic area. Their popular social events include at least one cruise a month, pot-luck suppers, dances, and their famous October Luau. But the Club has some serious purposes, too.

"Improving boating knowledge for safety and pleasure, and protecting the ecology are Club goals," Bill points out.

Bill and Marge Black joined the Sarasota Outboard Club in 1968 when they had a Boston Whaler. He served on the Board, then as Rear Commodore, Vice Commodore, and now Commodore. In addition to being First Lady, Marge heads up Club communications. They now have a 21-ft. Stamas cruiser with 165 HP Mercruiser out-drive plus ship-to-shore and Citizens Band radios.

At work Bill Black looks after EMR contractual details with many of our customers. He joined EMR in Ridgefield, Conn., in 1956, as a Systems Engineer, and soon transferred to Marketing. He attended Trinity College, Hartford, and received Navy electronics training, serving as a Chief Radio Technician at the Fleet Sonar School, Key West, during World War II. He worked with the Naval Research Lab in developing improved sonar equipment.

A native of Hartford, Conn., Bill was at Pratt & Whitney, Quality Name Plate Co.,



Bill Black in his SOC Commodore cap.

and Allied Engineering, before joining EMR. The Blacks' only daughter, Jean, is the wife of Sid LaCroix, Jr., son of our Ruth LaCroix of Manufacturing, and the Blacks have two grandchildren.

Bill is a ham radio operator (WA4DTA) in addition to his CB radio on his boat, which assists in keeping the Club boats in touch with each other on cruises and in bad weather.

"We really enjoy these boating weekends when as many as 42 member boats head for the same vacation spot, such as Marathon, Tarpon Springs, Ft. Myers Beach, etc.," Bill says. "As head of the SOC I've met people with varied vocations and avocations. It's been a real rewarding experience," he said as he prepares to doff his Commodore cap.

FIRST PUBLIC SHOWING

E. C. Channell and R. N. Ridgewell, of Instruments, will be exhibiting our new Model 1510 Spectrometer (Real-Time Spectrum Analyzer) at the 19th Annual Meeting of the Institute of Environmental Sciences in California April 2-5 -- the instrument's first public showing.

A BUSY GROUP--

PROCUREMENT VOLUME TOPS \$4.

Buying over \$4.5 million worth of materials and services each year for EMR-Telemetry, via 15,000 purchase requisitions and 7,100 purchase orders, reflects the magnitude of the effort of our Procurement Department.

"Problems of scarcity of material, vendor capacity and management capability, inflation, etc., all go into the basic decision process of a Buyer to obtain quality material at the best possible price and delivery," says Sam Gray, Manager of Procurement.

The prime function of purchasing is to protect the overall material investment of EMR-T. Procurement works with all departments in the plant and interfaces with some 500 vendors -- local, state, and nationwide.



Buyers John Moore, Gary Bowers and Dan Toler

Collectively, the nine members of our Procurement Department represent 117 years of EMR business experience. In addition to Sam Gray, they are: Subcontract Administrator John Moore, Buyers Gary Bowers and Dan Toler, Pricing Clerk Martha Feil, Procurement Clerks

Georgette Busick and Alice Mittelbach and Material Clerks Martha Fulton and Ida Pape. Each has a broad variety of job responsibilities and duties.



Martha Feil, Martha Fulton and Ida Pape are active in Procurement support.

The range of materials and services processed by this department is enormous: transistors, capacitors, meters, microelectronics, wire, gold, chemicals, film, office supplies, capital equipments, subcontracts, airline ticketing, leases, contract employees, moving new employees to Sarasota, etc.

And that's just a partial list of the items requisitioned by EMR-Telemetry employees.

"The requirement for going through Procurement to talk to vendors (salesmen) saves time and money," Sam Gray noted.

"A particular item you need may be the same thing we located for another requisitioner, so the comparative data on quality, quantity, pricing and delivery would be readily available, and thus the most economical buy made for EMR."

MILLION



As Manager of Procurement, Sam Gray is also responsible for our Material Control Department, with its 18 employees; our Traffic Section, with its five employees; Cafeteria, and our Small Business and Government Property programs. That is in addition to, but in consonance with, the buying function of Procurement -- one of EMR-T's busiest activities, and sole point at EMR for purchasing commitments.



Alice Mittelbach greets vendors and aids in other Procurement activities, including reservations.

GOLF, ANYONE? Call Skip Bailes, Ext. 194, or sign up via bulletin board notices!

SERVICE AND TRAINING SESSIONS HELD HERE

Four consecutive weeks of training and technical instructions are under way in Sarasota for EMR customers and our own Sales and Service personnel. Jon Brown, head of Customer Service and Training, described the activities as follows:

Week of Mar. 12 National Service Meeting - cross training for Customer Service and Sales personnel on new products in our telemetry and instruments product lines. Attendees: Wally Jones and Don Shumaker, of California, and Bob Voss, Silver Spring, Md. -- all of **Customer Service**. Sales: Ray Claflin, Boston; John Sherman, El Paso, and Ross Tilton, Denver.

Week of Mar. 19 PCM Course, taught by J. D. Brown - for customers, plus Dan Rendon, of our California Customer Service group.

Week of Mar. 26 FM Course, taught K. M. Uglow - for customers, plus Customer Service personnel: Scott Blair, based at NASA/Wallops; Nick Howard and Dan Rendon of California.

Week of April 2 National Service Meeting. Cross training and new product updates for telemetry and instruments lines. Attendees: Customer Service personnel, Messrs. Blair, Howard, Rendon, Frank Wakefield, and Chet Reynolds.

With the consolidation of our telemetry and instruments Sales force, our Aerospace Telemetry, Instruments and Industrial product lines are being sold and serviced by our combined Sales force and our Customer Service force. R. J. Klessig heads the Western Sales Area, and Tillie Castelletti has been named Manager of the Eastern Sales Area. Customer Service continues under the management of Jon Brown.

WE CARE

EMR MEN ACTIVE IN YOUTH BASEBALL PROGRAM

In the Babe Ruth League, they're known as Commissioner Don Buffington, and Managers Doyle Byrd and Randy Mitchell. These three EMR men devote many hours of volunteer effort to helping youth through a community baseball program.

Don Buffington, now in his third year as Commissioner of the local Babe Ruth League, directs the league play. His myriad duties include: setting up registration, conducting try-outs, organizing the player pool, meeting with Managers for player selection for the teams, sending the official roster to national headquarters; scheduling games and practice, briefing the boys' parents, official scorekeeper and keeping statistics on the boys' performance, announcing games at Payne Park, coordinating questions concerning rules, regulations, problems, rained-out games, tie games, etc.

As Managers, Randy Mitchell and Doyle Byrd have managing and coaching responsibilities -- Randy for the Ebersole Sod team, and Doyle for the team sponsored by Bohannon Mowers. Their teams are tied in first place right now.

"We have 120 boys, ages 13, 14 and 15, on eight teams," Don says, "and eight team Managers, plus coaches to assist them. Our season is March to mid-June, and each team plays 21 games. In addition, there's the special Round Robin for 13-year-old players only, plus district, state, regional and nationals for the 13-year-old and 14-15-year-old tournament teams during July and August.

All three men speak with pride of the Sarasota All Star team which went all the way to the Babe Ruth World Series in Albuquerque in 1971, a feat achieved by only one other Florida team in 20 years! Don's son, David, was a member of that team.



Talking baseball -- Don Buffington, of Engineering; Randy Mitchell, of Applications Engineering; Doyle Byrd of Test.

Doyle Byrd's been active in Babe Ruth baseball for 7 of the past 8 years. His boys, Benton (9) and Nathan (11) are in Little League. Doyle, Jr. (16) will try out for the 16-18-year-olds teams Apr. 7.

Randy Mitchell has 9 years of Little League and two years of Babe Ruth coaching experience. His son, Ricky, plays on his team, and Robbie Mitchell is now on a baseball scholarship at Mercer University, Macon, Ga.

Other EMR participants include the sons of Barry Barton, Walt Eppard, Jim Maguire and Walt Knopik.

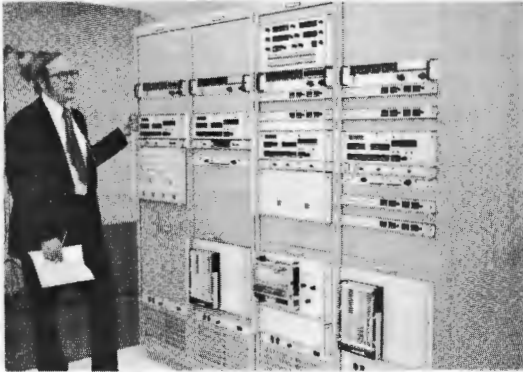
"We hope to expand the league and expect to have a building and field soon, south of the Boys Club," Don reports. "Practice and play are currently at Arthur Allyn field and Payne Park. This year we're starting a Senior Babe Ruth League, with four teams of 16-18 year-olds."

The three men and their active wives have many good reasons for giving their time and effort: they like the sport and enjoy working with the boys. They also know they are contributing to the boys' development and to the community's well being. And that's a good feeling!

BUSINESS NEWS -- SOME RECENT SHIPMENTS

Recent shipments from EMR-T to customers have included the following systems:

FAIRCHILD SYSTEM



The EMR decommutation system pictured here with Project Engineer Wiley Dunn was shipped to Fairchild Industries, Inc., Germantown, Md., for use on the ATS satellite ground check system. This equipment is a modification and add-on to the large data acquisition system EMR supplied to Fairchild a year ago on the Applications Technology Satellite program.

* * *

VAN-MOUNTED T/C SYSTEM

Another EMR telemetry/computer system mounted in a van has been delivered to the U. S. Army Aviation Systems Test Activity at Edwards AFB, Calif., for use at the Army's AIDAS facility. (Advanced Instrumentation and Data Analysis System)



Project Engineer Dick Haase with instrumented van ready for delivery to customer.

Van-Mounted T/C System (cont'd)

This system is the third such mobile van-mounted unit which EMR-T has delivered to the Army at Edwards. The large AIDAS facility is used for real-time flight safety and test data monitoring of new Army aircraft such as helicopters.

Valued at over \$250,000, the van and its instrumentation includes an EMR 6135 Computer and peripherals, plus PCM and FM telemetry and recorders for data reduction.

* * *

VTS FOR JOHN DEERE



Bob Anderson, of Engineering, is shown with a special EMR signal conditioning and VCO system which was shipped to John Deere Tractor Works, Dubuque, Iowa, for use by their Engineering Test Group in monitoring strain, stress and vibration in new earth-moving heavy equipment. Additional EMR equipment ordered by John Deere includes a transmitter plus the receiving/demultiplexing system. When combined with the pictured signal conditioner/multiplexer, the customer will have a complete EMR vehicle test system.

ARSENIA DAVIS SELECTS EARLY RETIREMENT

On March 30, Arsenia Davis completes her 16th year as an Assembler at EMR in Sarasota and starts her retirement. She will be our seventh retiree.



Arsenia Davis

"I've decided to retire early so that I can enjoy my home and the other activities I love, like gardening and fishing," Arsenia said. Her eyes light up when she talks about grafting her blooming cactus plants and the dozen citrus trees on her three acres in Old Miakka, near Myakka State Park. She has a vegetable garden, a milk cow and calf, chickens, and will probably raise her own pork. "I plan to live off the land," Arsenia says. "I love to wander through the Everglades collecting air plants and wild orchids. And with my two dogs I'll go fishing for perch and bass in Lake Okeechobee and along Alligator Alley."

Arsenia was born in Green Cove Springs, Fla. She joined EMR in 1957 at EMR's temporary quarters on Clark Rd. before our Production building was built. "Lela Kallio, Grace Mullinix, Hazel Taylor and I were classmates in the training class," she said.

Arsenia's family includes her daughter, Dorothy Richey, who is employed in our Microelectronics area, and son, Jimmy (an Army career man), plus four grandchildren.

Have fun, Arsenia. We'll miss you!

TASTY REQUEST . . .

Requests for EMR-T's product catalogue come in from all over the world. One recent request arrived neatly typed on the back of a label from a can of Dole pineapple. It was from Hawaii, of course!

MAJOR EMPLOYEE BENEFIT --

GROWTH PLAN TOTAL NOW OVER \$1,000,000

(Cont'd from Page 1)

Here's a summary of the Growth Plan for EMR-T employees at the end of 1972:

Company Contributions (1972)

- 1% of admissible compensation for each employee who has been with the Company for more than one year on 1/1/72. (This amount was credited to your account even if you were not a contributor to the Growth Plan) \$38,626.
- 35% of each employee's contribution \$55,187.
- Total Company Contribution (1972) \$ 93,813.

Earnings (1972)

- (Trust investment income and appreciation) \$ 71,793.
- \$ 165,677.

Employee Contributions (1972) (between 1% and 6% of admissible compensation)

\$ 157,077.

1972 Growth Plan Total for EMR-T Employees

\$ 323,283.

Previous Balance, through 1971

\$ 697,934.

Total of EMR-T Growth Plan as of 12/31/72

\$1,021,217.

EMPLOYEES IN THE NEWS...

Judy Amuso (Personnel), Jim Eames (Production) and Alice Mittelbach (Procurement) served as judges in a Job Interview Contest held at the Sarasota County Vo-Tech Center on March 14. Vocational training students from 11 nearby counties participated in the regional meeting at the local school.

* * *

Royal Bechtold, Manager of Administration, will talk about EMR before the High Twelve Club on April 2.