



The EMR-Telemetry News Sarasota, Florida

Vol. VI, No. 12

21 April 1972

EMR INSTRUMENTS SOLD TO JAPAN

An Automatic Bode Plotter system--built around EMR Instruments' Model 1410 Frequency Response Analyzer--is en route from Sarasota to Japan. Our Instruments organization has sold the system to Toyo Trading, of Tokyo. The equipment includes our Model 1410 Frequency Response Analyzer, Model 1450 Paper Tape Programmer, Model 1401 Interface Panel, and an X-Y Plotter.

The system is used in automated production test facilities for plotting the response of servomechanisms, filters, etc.



Senior Engineering Technician Ed Domrzalski and Principal Engineer Frank Lynch, of Instruments Engineering, with Automatic Bode Plotter prior to its shipment to Japan.

ANNIVERSARY GREETINGS

Happy anniversary to the 23 employees observing service anniversaries during April, including the following major milestones for 10 and 15-year veterans:

1957	Grace Bryan	Randy Mitchell
	Arsenia Davis	Grace Mullinnix
	Lela Kallio	Peter Smith
	Hazel Taylor	
1962	Lonnie Gunter	

PICNIC SET FOR MAY 20

Saturday, May 20, is the day for the big EMR-T annual Family Picnic. Chris Papastrat, of Quality Assurance, is our Picnic Chairman. Assisting with the planning are the members of the Employees Association's Board, including: Mary Bell, Production; Frank Bost, Engineering; Daryl DeLoreto, Production; Ed Domrzalski, Engineering; Frank Guinn, Marketing; Kent Morgan, Marketing; Roma Parker, Production; Pearl Point, Reprographics; Jim Rexrode, Production Control, and Johnnie Williams, Microcircuits.

Watch for bulletin board announcements of details!

WATER QUALITY SEMINAR PRESENTED FOR ENGINEERS

EMR-Telemetry will host a two-day Water Quality Instrumentation Seminar for approximately 35 visiting engineers enrolled in the Retro Project--a program funded by the Government to retrain aerospace engineers for jobs in other areas such as environmental engineering.

On May 4-5, Senior Principal Engineer W. N. Waggenger will discuss water systems and processes; water quality monitoring systems, and instrumentation. The group will tour our water treatment facility and instrumentation labs.

These "students" in the Retro program attend classes at universities in the Cape Kennedy area, including Florida Institute of Technology and Nova University. Jon Brown, of Customer Service & Training, is coordinating Seminar plans.

CREDIT UNION GROWING

GROWTH--that's the goal for 1972 for our EMR Sarasota Employees Credit Union, according to Royal A. Bechtold, recently elected President of the ESECU. "We're aiming for increased membership and more loans this year. Some 25 new members have already joined up during our current membership drive," Royal said.

Pictured here are members of the Credit Union Board and Chairmen of the Supervisory and Credit Committees:



Seated: President Royal A. Bechtold; Vice-President Joe Pipala; Secretary Dot Watson; Treasurer Gary L. Bowers. Standing: Board members John Norton, Marshall K. DuBois and Jo Snyder, with Supervisory Committee Chairman Bill Gregory; Credit Committee Chairman George Zimmerman, and Credit Union Clerk Brenda Hall.

BYRD JOINS COMMITTEE ON ENVIRONMENTAL STUDY

Clarence G. Byrd, Manager of Research and Engineering, has been named to a special Citizens Advisory Committee for the recently formed New College Environmental Studies Program. The program aims to utilize the local college as a center for study and analysis of the local environment from Sarasota Bay to Charlotte Harbor. Clarence Byrd is also an active participant in the Environment Committee of the Sarasota Chamber of Commerce.

AN EMPLOYEE BENEFIT -- GROWTH PLAN TOTAL REACHES \$800,000

When the Schlumberger Contributory Investment Growth Plan annual statements for 1971 were distributed to employees recently, each participant was advised of his individual share in the Growth Plan. The fund totaled over \$800,000 at year-end for EMR-T employees.

The Growth Plan--one of our major employee benefits--consists of individual employee contributions, Company contributions, earnings (investment income and appreciation) and a previous balance which also includes assets of our old Profit-Sharing Plan.

Especially happy news for participants this year was the substantial increase in Growth Plan earnings credited to each participant's account. The Trust investment income and appreciation amounted to better than 16% on the 1970 year-end balance.

A portion of this total amount will be paid out to terminated employees who were partially or fully vested. Some 47 ex-employees will soon be receiving checks for their Growth Plan payout -- totaling over \$64,000.

The Growth Plan provides a form of savings for all employees. Details of the Growth Plan are available in a booklet entitled "Your Retirement Benefits." The booklet includes information about the Schlumberger Retirement Plan and the Contributory Investment Growth Plan. If you have questions about the Growth Plan, please call Judy Amuso, Personnel & Services, Ext. 292.

PULSE - The EMR-Telemetry News

M. E. Herbst, Editor

Permission to reprint material herein may be obtained from the Editor, Pulse

COPYRIGHT © 1972 EMR DIVISION OF WESTON INSTRUMENTS, INC.

A SCHLUMBERGER COMPANY

Here's a summary of the Growth Plan for EMR-T employees at the end of 1971:

<u>Employee Contributions (1971)</u> (between 1% and 6% of admissible compensation)	\$170,438.83
<u>Company Contributions (1971)</u> • 1% of admissible compensation for each employee who has been with the Company for more than one year on Jan. 1, 1971. (This amount was credited to your account even if you were not a contributor to the Growth Plan)	\$43,893.56
• 25% of each employee's contribution	<u>\$42,609.71</u>
• Total Company contribution (1971)	\$ 86,503.27
<u>Earnings (1971)</u> (Trust investment income and appreciation)	<u>\$ 81,309.47</u>
1971 Growth Plan Total for EMR-T Employees	\$338,251.57
Previous Balance, through 1970	<u>\$500,541.43</u>
<u>TOTAL as of 12/31/71</u>	<u>\$838,793.00</u>

M. J. MANNING

M. J. (Joe) Manning, Machinist in our Production Department, died March 20 of a heart attack. He was employed at EMR since 1962 and is survived by his wife, Marie, and a son. Joe was a valued employee who will be greatly missed by his many EMR friends.



BOWLING BASH MAY 6

EMR-T's Winter Mixed Bowling League banquet is scheduled for May 6 at Eagles Hall on Lime Ave. There'll be dinner, dancing to the DR's, beer and set-ups--free to League members, and only \$3 for guests. See Jim Rexrode for your tickets.

PLAN EARLY RETIREMENT



Luella Clabough (left) and Ethelyn "Mac" Brown look happy about the prospects of early retirement which they plan to take soon.

Luella, Inspector in Quality Control for nearly 13 years, has decided to retire at the end of April under the early retirement provisions of the Schlumberger Retirement Plan.

Ethelyn (better known as "Mac" to her colleagues) joined EMR in Ridgefield, Conn. She recently celebrated her 20th anniversary of employment in our Production Department and has chosen May 12 as the date for her early retirement.

Both ladies say they're going to "take life easy." Luella expects to cultivate her roses and enjoy camping with her husband, sewing, fishing and the beach. Mac and her husband have tentative plans for trips to visit their children in Biloxi, Fort Worth, Connecticut and Jacksonville.

As our list of retirees grows, Luella becomes the fifth, and Mac will be the sixth EMR-T employee to retire under our company pension plan. All the best, ladies!

HALL IN PRINT

Congratulations to Charlie Hall, Senior Engineer in TDM Engineering, on the publication of his article, "A Technique for Binary BCD Conversion" appearing in Computer Design (pp. 102-108), March, 1972. A copy of the article is available in our Technical Info Center.

NEWEST DISCRIMINATOR READY FOR THE MARKET

Introducing EMR's newest Discriminator -- our Model 410 Universal Tunable Discriminator (UTD). Prototypes of the new UTD have already been demonstrated to potential customers in the field, and our first Production unit (a Marketing demonstrator) is due in June.

Project Engineer Don Buffington describes the 410 Universal Tunable Discriminator as a "fully tunable, self-contained unit which can process any standard or non-standard FM subcarrier under either manual or computer control--without additional equipment, plug-ins or modifications."

For its broad capability, the new Discriminator requires 863 different individual parts, and a grand total of 7082 parts. "But despite its complexity, we can remove or install any sub-assembly using only a screwdriver -- eliminating the use of special tools or unsoldering of wires," Don said. "Ease of producibility and maintenance were kept in mind in the mechanical and packaging design."

Commenting on the new product's marketability, Product Manager S. Kent Morgan, of Marketing, said, "The Model 410 offers greater range, better performance and more user-oriented features than any other discriminator on the market. Customer acceptance has been great, and we



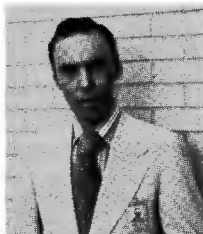
Kent Morgan, Don Buffington and Jerry Belveal (seated) with our new UTD.

should be able to sell these units as fast as we can build them this year."

Engineering team members include: Project Engineer Don Buffington, Design Engineers Bob Hughen and Hal Roberts; Technicians John Belt, Chris Freeberg, Richard Mazza, System Specialist Mike Russell, and many others. From Production, Test Engineer Jerry Belveal and Test Technicians Lonnie Gunter and Harold Miller are also deeply involved in the project.

JERRY REIDER NAMED EMR-T WASHINGTON REP

Jerry E. Reider has joined EMR-Telemetry as our Washington Representative, according to an announcement by General Manager L. G. Chappell. He will be based in our Silver Spring, Md., office, and will represent EMR-T directly with the Department of Defense and other Federal agencies.



"Jerry will concentrate on acquiring new, profitable business for EMR-T in special market segments such as SimFire and water quality monitoring," Mr. Chappell said.

He comes to EMR from GTE/Sylvania, Washington, D. C., where for six years he served as a Washington Representative for the Sylvania Electronic Systems Group. He was with Lear Siegler, Inc., in a similar capacity from 1961 to 1965. Between 1952 and 1961 he was employed by Sikorsky Division of United Aircraft. He served in the Navy air arm, 1950-1952, and is a pilot.

Born in Jacksonville, Fla., Jerry holds an aeronautical engineering degree from the Academy of Aeronautics, Flushing, N. Y. His interests include skiing, sailing, and his current project: restoring an antique biplane (a 1929 Fleet) in the basement of his house in Bethesda, Md.